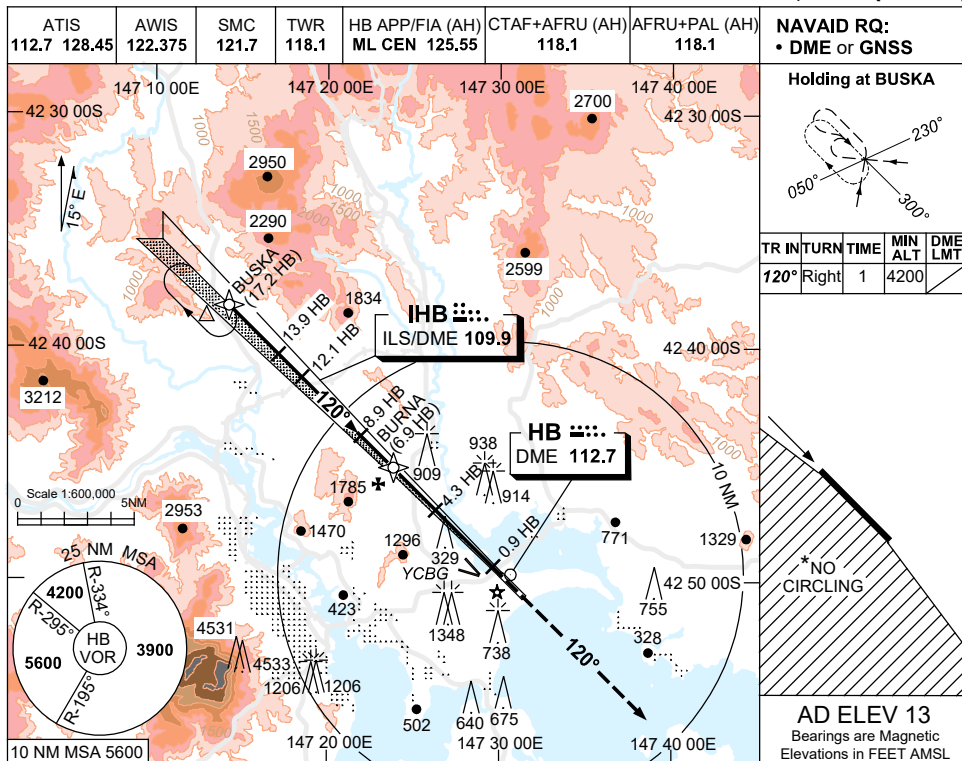


USE QNH

ILS-Y or LOC-Y RWY 12  
**HOBBART, TAS (YMHB)**

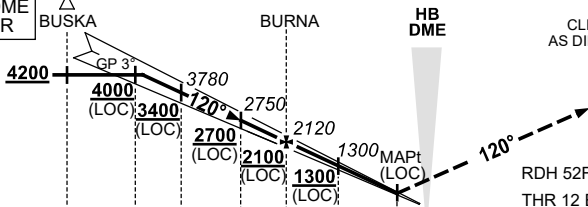
21 MAR 2024



NM TO HB DME	13.4	13	12.1	11	10	8.9	8	6.9	5	4.3	3	2	1.9		
ALT (3° APCH PATH)	4200	4070	3780	3430	3110	2750	2480	2120	1520	1300	880	560	530		

GNSS permitted in lieu of DME  
 Reference waypoint HB VOR

**MISSED APPROACH:**  
 TRACK 120°  
 CLIMB TO 4000ft OR  
 AS DIRECTED BY ATC.



NM TO HB DME		17.2	13.9	12.1	8.9	6.9	4.3	0.9	0.4	
NM TO THR 12		16.7	13.4	11.6	8.4	6.4	3.9	0.5	0	

**NOTES**

1. MAX IAS:  
HOLDING : 200KT.
- \* 2. NO CIRCLING WEST OF RWY 12/30.
- # 3. MIN MAP GRAD ILS 4.2%,  
MIN MAP GRAD LOC 3.9%,  
CTA CONTAINMENT.
4. COLOUR: SEE SPEC NOTICES.

CATEGORY	A	B	C	D
S-I ILS #		320 (308)	0.8	
S-I LOC#		530 (517-2.1)		
CIRCLING*	1240 (1227-2.4)		1530 (1517-4.0)	1600 (1587-5.0)
ALTERNATE	(1727-4.4)		(2017-6.0)	(2087-7.0)

Changes: DELETED MAX IAS AT BUSKA, VIS.

MHBII01-178