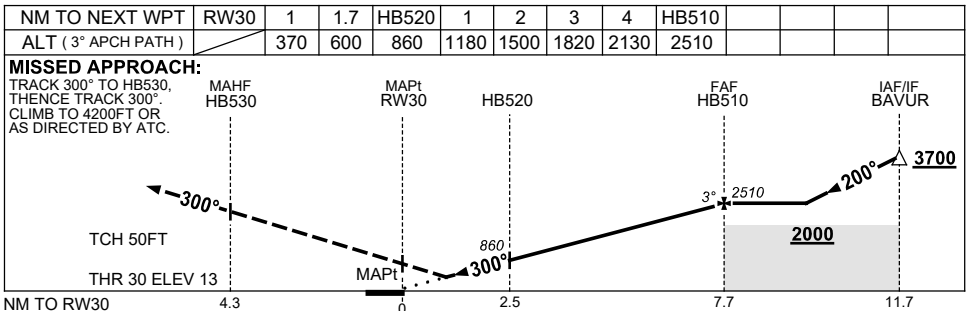
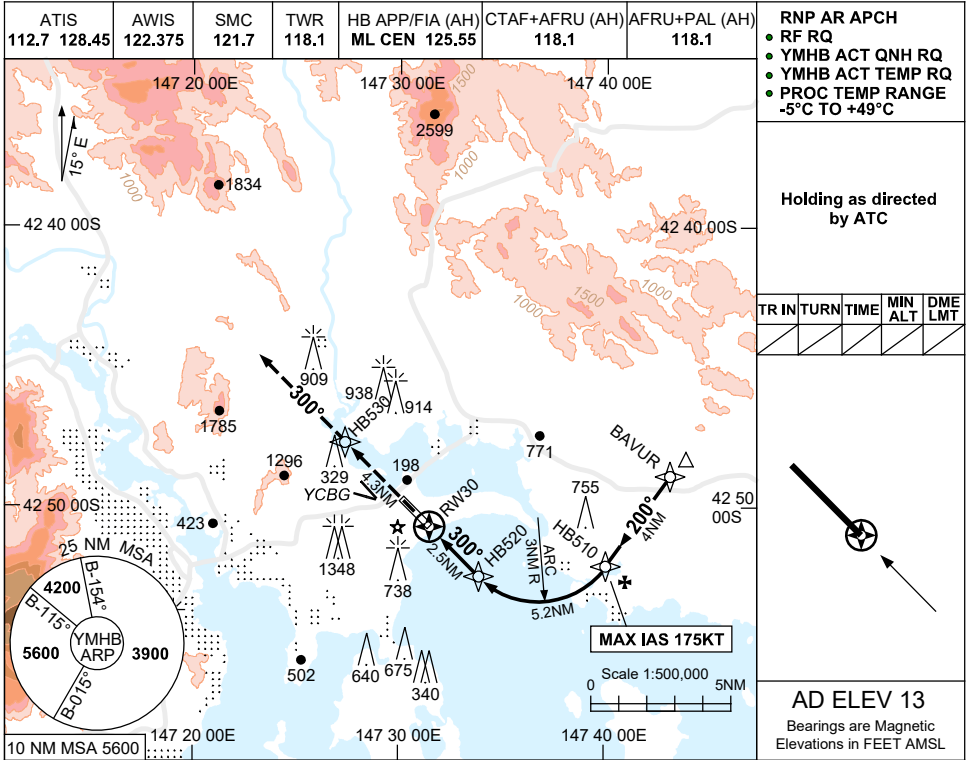


FOR CASA APPROVED OPERATORS ONLY RNP-AR APPROACH PROCEDURE

USE QNH

RNP W RWY 30 (AR)
HOBART, TAS (YMHB)

7 SEP 2023



| CATEGORY | A | B | C | D |
|---------------------|----------------------|------------|---|------------|
| RNP (0.3)(2.5% MAP) | 600 (587-3.3) | | | |
| RNP (0.3)(4.2% MAP) | 370 (357-2.0) | | | |
| CIRCLING | NOT AUTHORISED | | | |
| ALTERNATE | (1727-4.4) | (2017-6.0) | | (2087-7.0) |

- NOTES**
- MAX IAS:
HB510 : 175KT.
 - COLOUR: SEE SPEC NOTICES.

Changes: YCBG DEPICTION.

MHBGN04-176