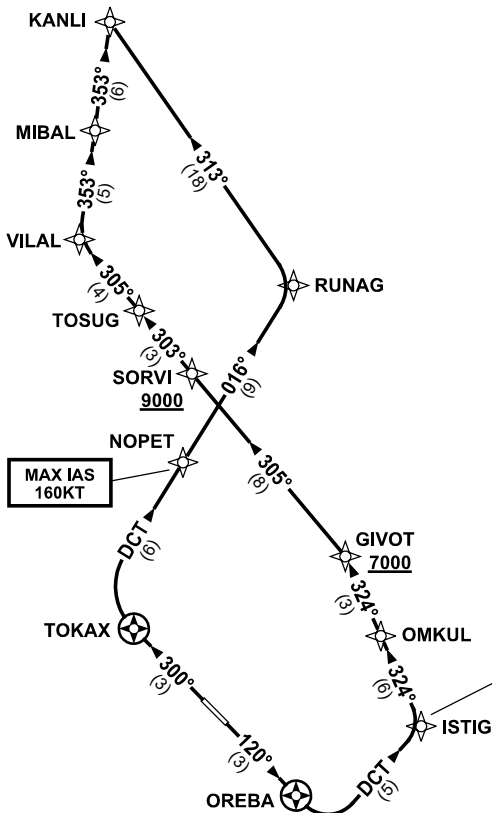


**STANDARD INSTRUMENT DEPARTURES (SID)
KANLI THREE DEPARTURE (NON-JET) (RNAV)
HOBART TAS (YMHB)**

30 NOV 2023

ATIS 112.7 128.45	AWIS 122.375	SMC/ACD 121.7	TWR 118.1	HB APP/FIA (AH) ML CEN 125.55	CTAF+AFRU (AH) 118.1	AFRU+PAL (AH) 118.1	Bearings are Magnetic Elevations in FEET AMSL
----------------------	-----------------	------------------	--------------	----------------------------------	-------------------------	------------------------	--

NOT TO SCALE



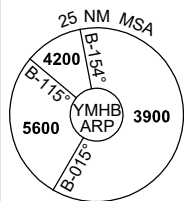
**CLASS D SPEED
LIMITS APPLY**

RNP 1

**SPEED
MAX IAS 250KT
BELOW 10,000ft**

**MAX IAS
160KT**

**MAX IAS
150KT**



10 NM MSA 5600

KANLI THREE (NON-JET) DEPARTURE

RWY 12

- GRAD 3.3%
MAX IAS 150KT until ISTIG
- Track 120° to OREBA
- Turn LEFT, track DCT to ISTIG
- Turn LEFT, track 324° to OMKUL
- Track 324° to GIVOT
Cross GIVOT AT or ABV 7000ft (RQ GRAD to GIVOT 6.9%)
- Turn LEFT, track 305° to SORVI
Cross SORVI AT or ABV 9000ft (RQ GRAD GIVOT to SORVI 4%)
- Track 303° to TOSUG
- Track 305° to VILAL
- Turn RIGHT, track 353° to MIBAL
- Track 353° to KANLI

RWY 30

- GRAD 6.9% to 1300ft thence 3.3%
MAX IAS 160KT until NOPET
- Track 300° to TOKAX
- Turn RIGHT, track DCT to NOPET
- Track 016° to RUNAG
- Turn LEFT, track 313° to KANLI

Changes: SPEED RESTRICTION, Editorial.

MHBPD05-177