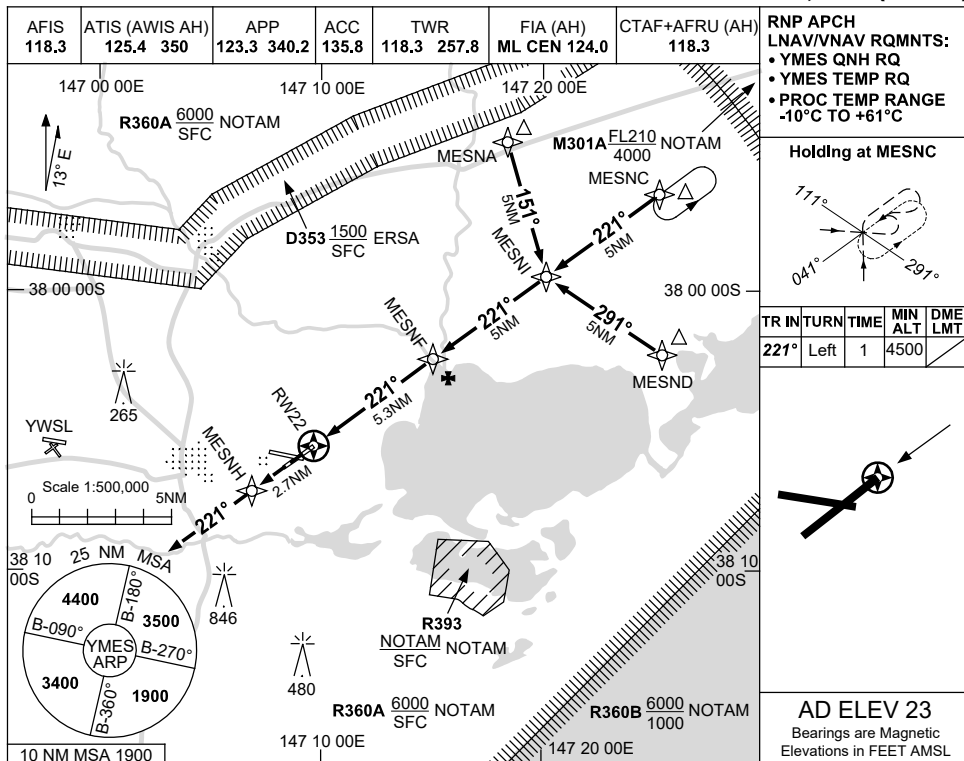


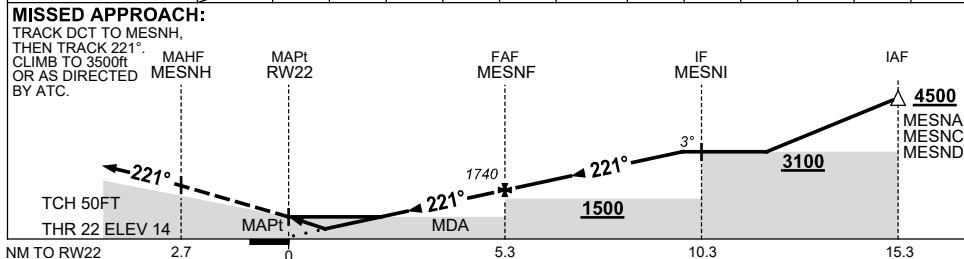
USE QNH

RNP RWY 22  
EAST SALE, VIC (YMES)

28 NOV 2024



NM TO NEXT WPT	RW22	0.9	1.5	2	3	4	MESNF	1	2	3	4.3		
ALT (3° APCH PATH)		360	550	700	1020	1340	1740	2060	2380	2700	3100		



CATEGORY	A	B	C	D
LNAV/VNAV		360 (346-1.9)		
LNAV		550 (536-3.0)		
CIRCLING	620 (597-2.4)		830 (807-4.0)	1030 (1007-5.0)
ALTERNATE	(1097-4.4)		(1307-6.0)	(1507-7.0)

**NOTES**  
1. MAX IAS: INITIAL : 210KT.

Changes: R391A-B DELETED, R393 ADDED, YWSL AD, Editorial.

MESGN02-181