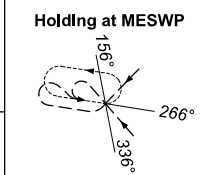
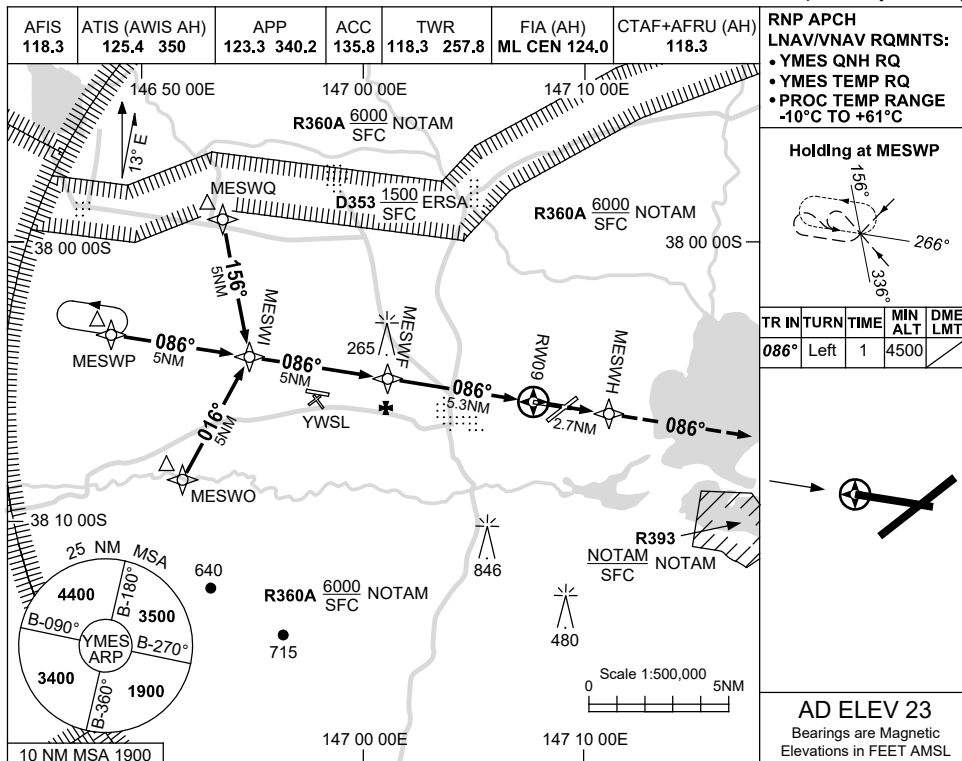


USE QNH

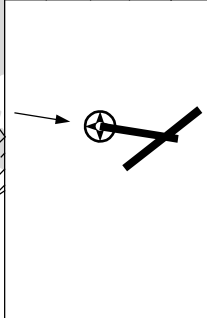
RNP RWY 09

28 NOV 2024

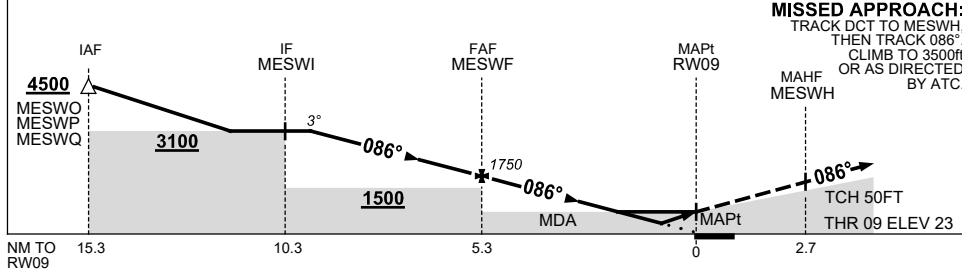
EAST SALE, VIC (YMES)



TR	INTURN	TIME	MIN ALT	DME LMT
086°	Left	1	4500	



NM TO NEXT WPT	4.2	3	2	1	MESWF	4	3	2	1.5	0.9	RW09
ALT (3° APCH PATH)	3100	2710	2390	2070	1750	1350	1030	710	550	360	



NOTES

CATEGORY	A	B	C	D
LNAV/VNAV		360 (337-1.9)		
LNAV		550 (527-3.0)		
CIRCLING	620 (597-2.4)		830 (807-4.0)	1030 (1007-5.0)
ALTERNATE	(1097-4.4)		(1307-6.0)	(1507-7.0)

- MAX IAS:
INITIAL : 210KT.
- HOLDING NOT
CONTAINED WITHIN
EAST SALE RESTD
AREAS.

Changes: R391A-B DELETED, R393 ADDED, YWSL AD, Editorial.

MESGN01-181