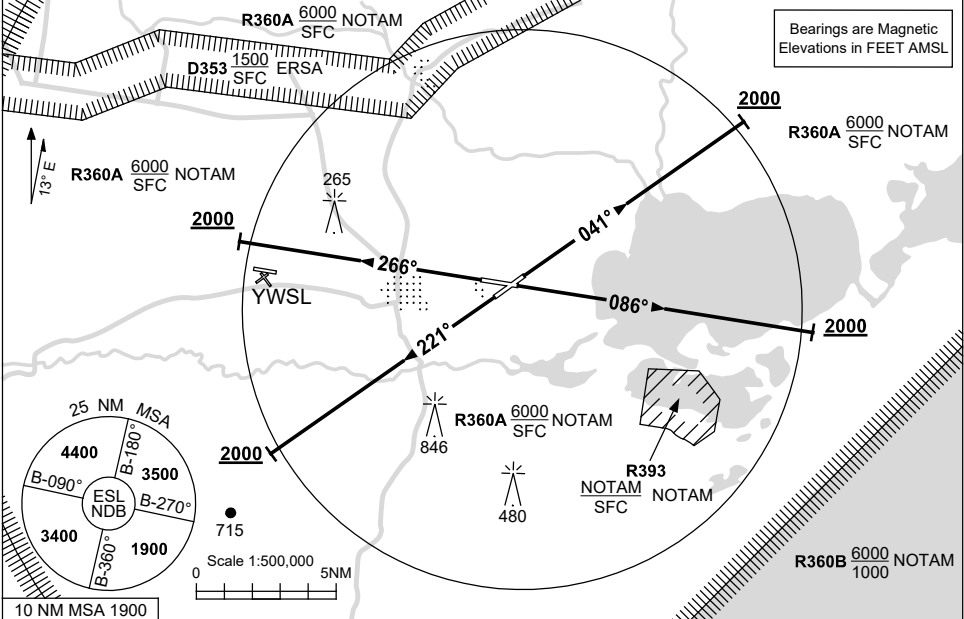


**STANDARD INSTRUMENT DEPARTURES (SID)  
EAST SALE FIVE DEPARTURE (RADAR)  
EAST SALE, VIC (YMES)**

**28 NOV 2024**

AFIS 118.3	ATIS (AWIS AH) 125.4 350	SMC 127.25	ACD 134.1	TWR 118.3 257.8	APP 123.3 340.2	ACC 135.8	FIA (AH) ML CEN 124.0	CTAF+AFRU (AH) 118.3
---------------	-----------------------------	---------------	--------------	--------------------	--------------------	--------------	--------------------------	-------------------------



**EAST SALE FIVE DEPARTURE (RADAR)**

**RWY 04**

- GRAD 3.3%
- Track 041°
- At 2000ft, but not before DER, turn to assigned heading or track

**RWY 09**

- GRAD 3.3%
- Track 086°
- At 2000ft, but not before DER, turn to assigned heading or track

**RWY 22**

- GRAD 3.6% to 1200ft then 3.3%
- Track 221°
- At 2000ft, but not before DER, turn to assigned heading or track

**RWY 27**

- GRAD 3.3%
- Track 266°
- At 2000ft, but not before DER, turn to assigned heading or track

**COMMUNICATIONS FAILURE PROCEDURE**

On recognition of communication failure

- Squawk 7600
- Maintain last assigned vector for two minutes, and
- CLIMB IF NECESSARY TO MINIMUM SAFE ALTITUDE, to maintain terrain clearance, then
- proceed in accordance with the latest ATC route clearance acknowledged.

Changes: R391A-B DELETED, R393 ADDED, Editorial.

MESDP01-181