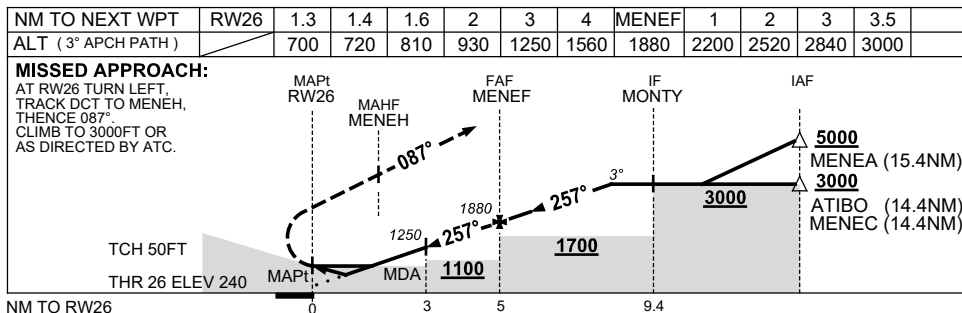
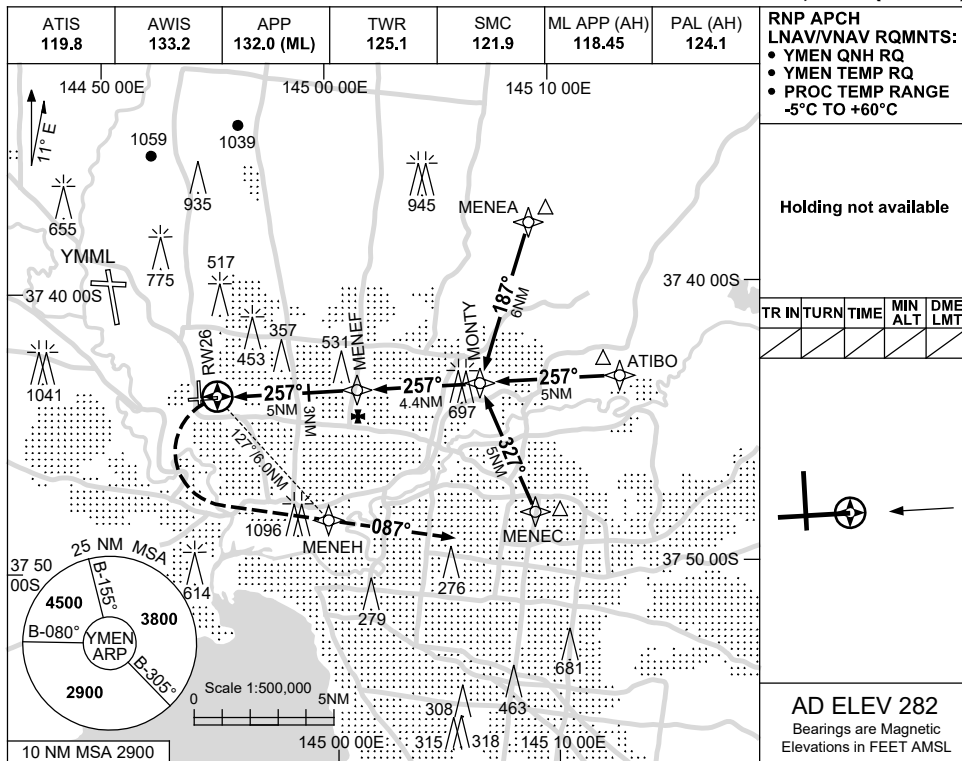


USE QNH **RNP RWY 26**
MELBOURNE/ESSENDON, VIC (YMEN)

15 JUN 2023



NOTES

CATEGORY	A	B	C	D
LNAV/VNAV		700 (460-2.6)		720 (480-2.7)
LNAV		810 (570-3.2)		
CIRCLING	990 (708-2.4)		1260 (978-4.0)	1540 (1258-5.0)
ALTERNATE	(1208-4.4)		(1478-6.0)	(1758-7.0)

1. MAX IAS:
 INITIAL : 210KT.
 MAP TURN: 240KT.

Changes: MINIMUM SEGMENT ALT, Editorial. MENGN01-175