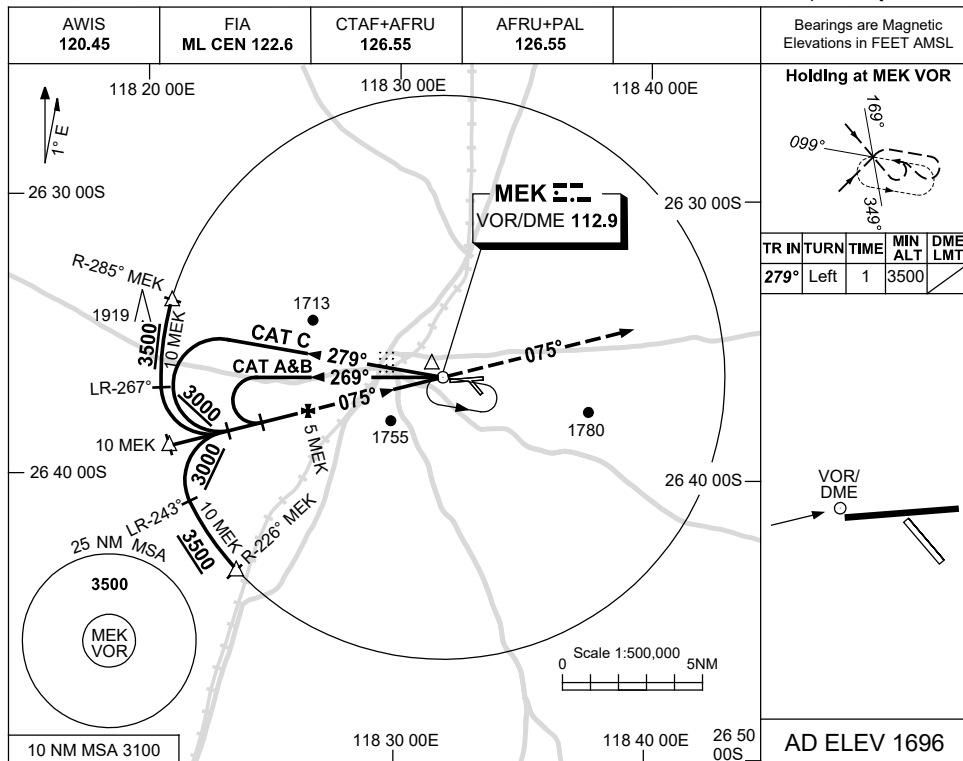


USE QNH

VOR RWY 09
MEEKATHARRA, WA (YMEK)

28 NOV 2024



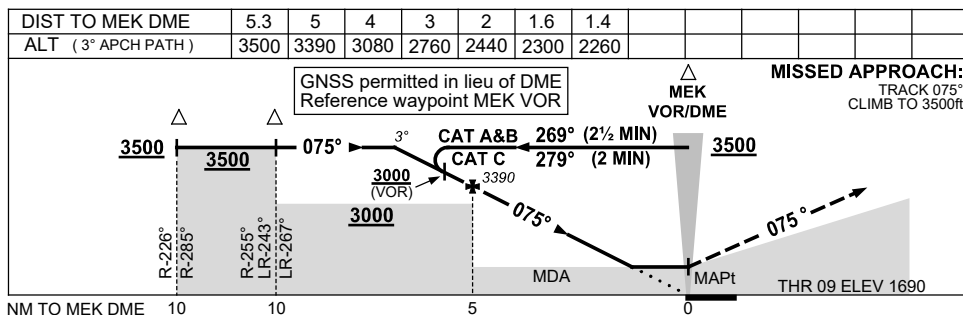
Bearings are Magnetic
Elevations in FEET AMSL

Holding at MEK VOR

TR	IN	TURN	TIME	MIN ALT	DME LMT
279°	Left	1	3500		

VOR/DME

AD ELEV 1696



NOTES

CATEGORY	A	B	C	D
S-I VOR		2300 (604-3.4)		NOT APPLICABLE
S-I VOR/DME		2260 (564-3.2)		
CIRCLING	2440 (744-2.4)		2530 (834-4.0)	
ALTERNATE	(1244-4.4)		(1334-6.0)	

1. MAX IAS :
HOLDING : 210KT.
INITIAL : 210KT.

Changes: AD ELEV, THR ELEV, SI-VOR VIS.

MEKVO01-181