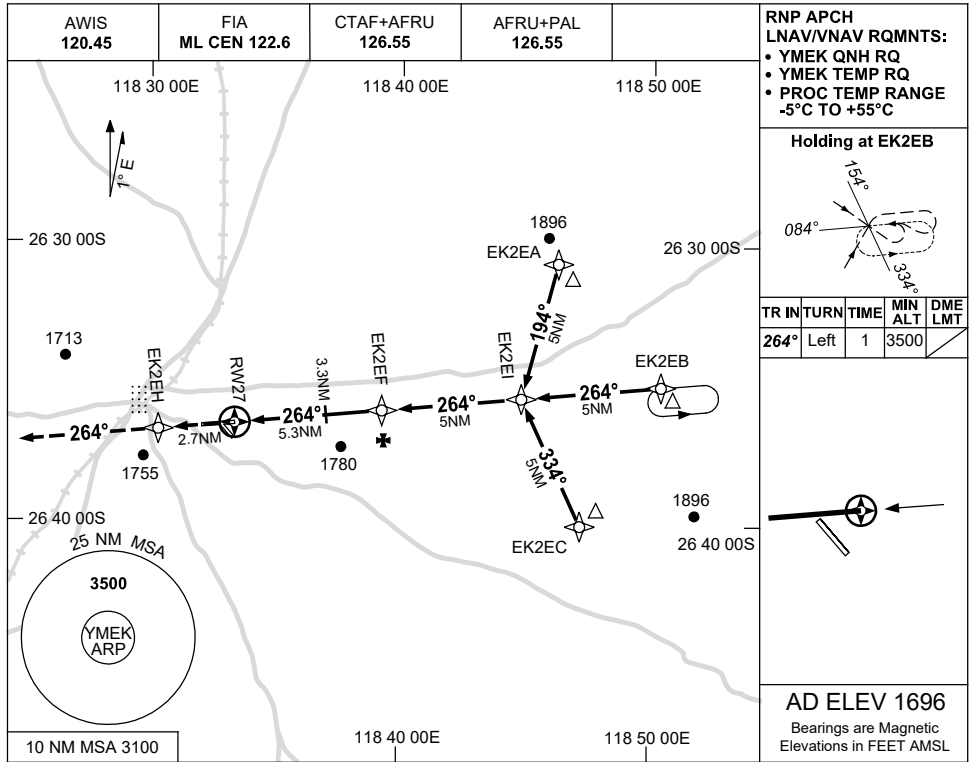


USE QNH

RNP RWY 27
MEEKATHARRA, WA (YMEK)

28 NOV 2024



RNP APCH LNAV/VNAV RQMNTS:

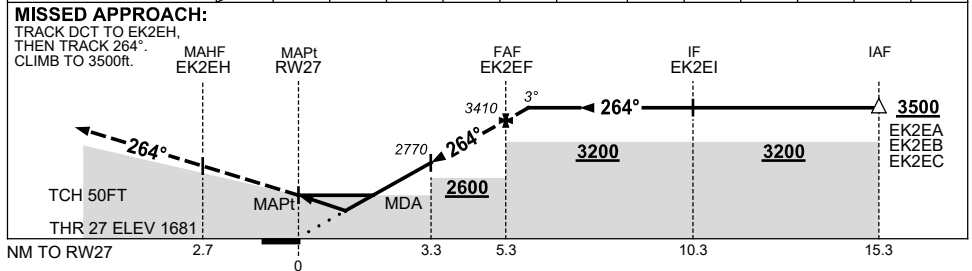
- YMEK QNH RQ
- YMEK TEMP RQ
- PROC TEMP RANGE -5°C TO +55°C

Holding at EK2EB

| TR | TURN | TIME | MIN ALT | DME LMT |
|------|------|------|---------|---------|
| 264° | Left | 1 | 3500 | |

AD ELEV 1696
Bearings are Magnetic
Elevations in FEET AMSL

| NM TO NEXT WPT | RWY27 | 1 | 1.7 | 2 | 3.3 | 4 | EK2EF | 0.3 | | | | |
|--------------------|-------|------|------|------|------|------|-------|------|--|--|--|--|
| ALT (3° APCH PATH) | | 2060 | 2260 | 2370 | 2770 | 3000 | 3410 | 3500 | | | | |



NOTES

| CATEGORY | A | B | C | D |
|-----------|----------------|----------------|----------------|----------------|
| LNAV/VNAV | | 2060 (379-2.1) | | NOT APPLICABLE |
| LNAV | | 2260 (579-3.3) | | |
| CIRCLING | 2440 (744-2.4) | | 2530 (834-4.0) | |
| ALTERNATE | (1244-4.4) | | (1334-6.0) | |

1. MAX IAS: INITIAL : 210KT.

Changes: AD ELEV, THR ELEV, Editorial.

MEKGN02-181