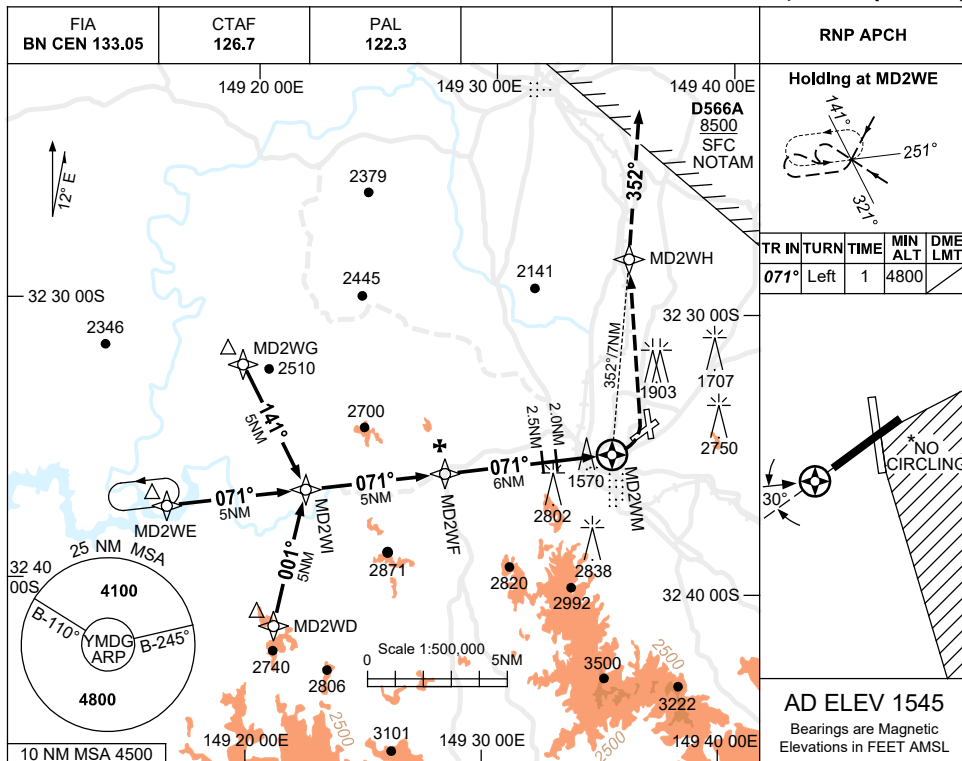


USE QNH

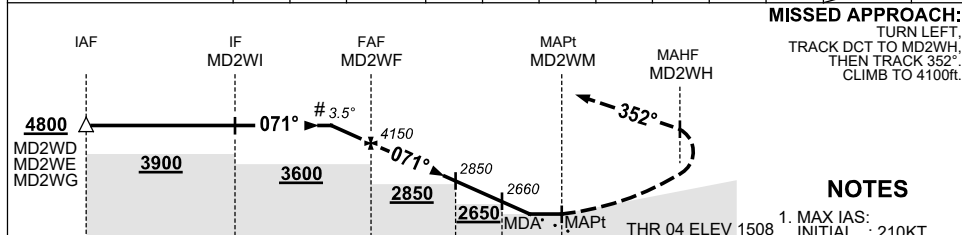
RNP RWY 04

21 MAR 2024

MUDGEES, NSW (YMDG)



NM TO NEXT WPT	1.8	1	MD2WF	5	4	3	2.5	2	1.3	0.9	MD2WM
ALT (# 3.5° APCH PATH)	4800	4520	4150	3780	3400	3030	2850	2660	2390	2260	



**NOTES**

1. MAX IAS: INITIAL : 210KT. CAT C MAPCH TURN: 160KT.
2. NO CIRCLING IN SECTOR S OF RWY 04/22 AND E OF RWY 16/34.
3. AWIS (PHONE) 02 9353 6439
4. APCH PATH ANGLE DOES NOT COINCIDE WITH PAPI ON SLOPE INDICATION.
5. COLOUR: SEE SPEC NOTICES.

CATEGORY	A	B	C	D
LNAV	2390 (882-4.4)		NOT AUTHORISED	NOT APPLICABLE
LNAV (3.3% MAPCH)	2260 (752-3.7)			
CIRCLING*	3110 (1565-2.4)		3520 (1975-4.0)	
ALTERNATE	(2065-4.4)		(2475-6.0)	

Changes: D566A ADDED, Editorial.

MDGGN02-178