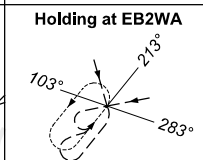
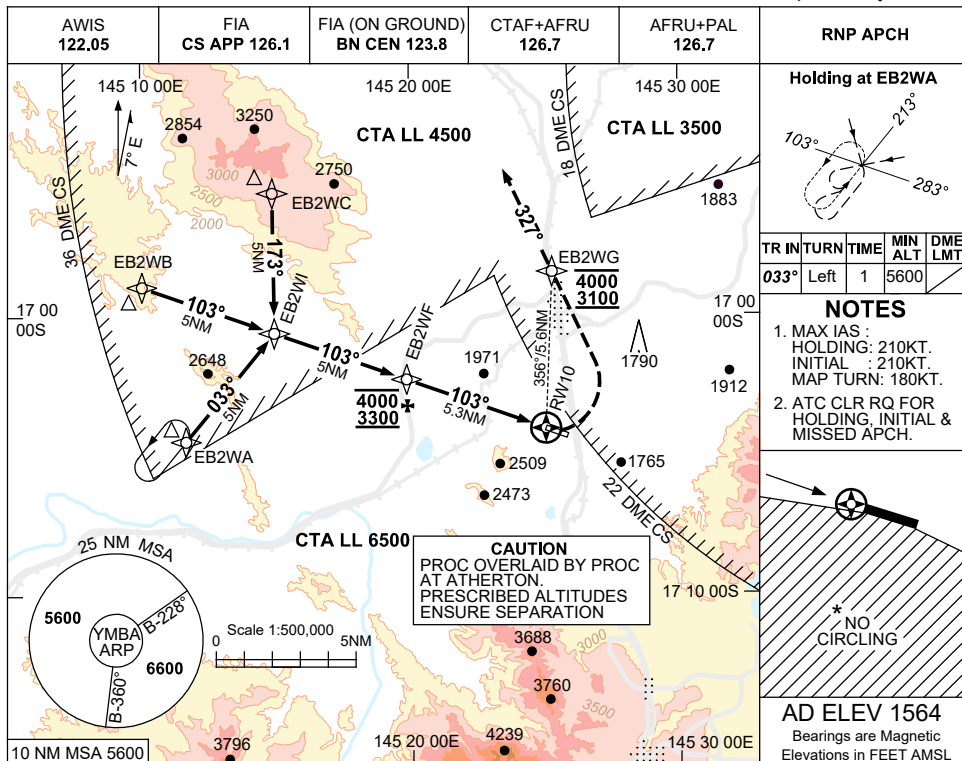


USE QNH

RNP RWY 10

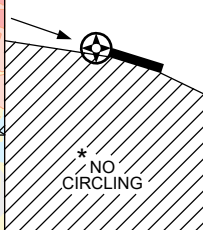
MAREEBA, QLD (YMBA)

15 JUN 2023



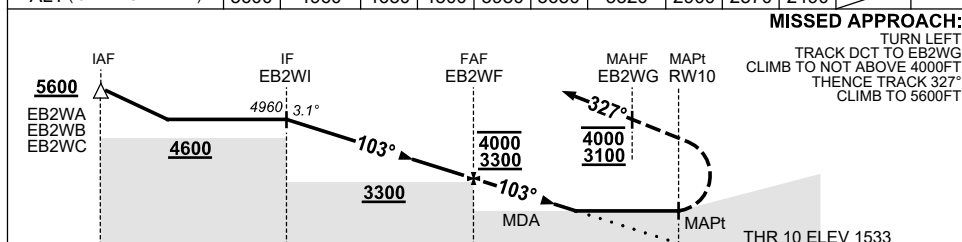
TR	IN	TURN	TIME	MIN ALT	DME LMT
033°	Left	1	5600		

- NOTES**
- MAX IAS :
HOLDING : 210KT.
INITIAL : 210KT.
MAP TURN : 180KT.
 - ATC CLR RQ FOR HOLDING, INITIAL & MISSED APCH.



AD ELEV 1564
Bearings are Magnetic
Elevations in FEET AMSL

NM TO NEXT WPT	1.9	EB2WI	4	3	2	1	EB2WF	4	3	2.8	RW10
ALT (3.1° APCH PATH)	5600	4960	4630	4300	3980	3650	3320	2900	2570	2490	



MISSED APPROACH:
TURN LEFT,
TRACK DCT TO EB2WG.
CLIMB TO NOT ABOVE 4000FT.
THENCE TRACK 327°.
CLIMB TO 5600FT.

NM TO RWY10	15.3	10.3	5.3	0
-------------	------	------	-----	---

- NOTES**
- HOLDING NOT FULLY CONTAINED IN CTA.
 - NO CIRCLING STH OF RWY 10/28.
 - COLOUR: SEE SPEC NOTICES.

CATEGORY	A	B	C	D
LNAV	2490 (957-5.0)			NOT APPLICABLE
CIRCLING *	2490 (926-2.4)		2700 (1136-4.0)	
ALTERNATE	(1426-4.4)		(1636-6.0)	

Changes: AFRU+PAL.

MBAGN01-175