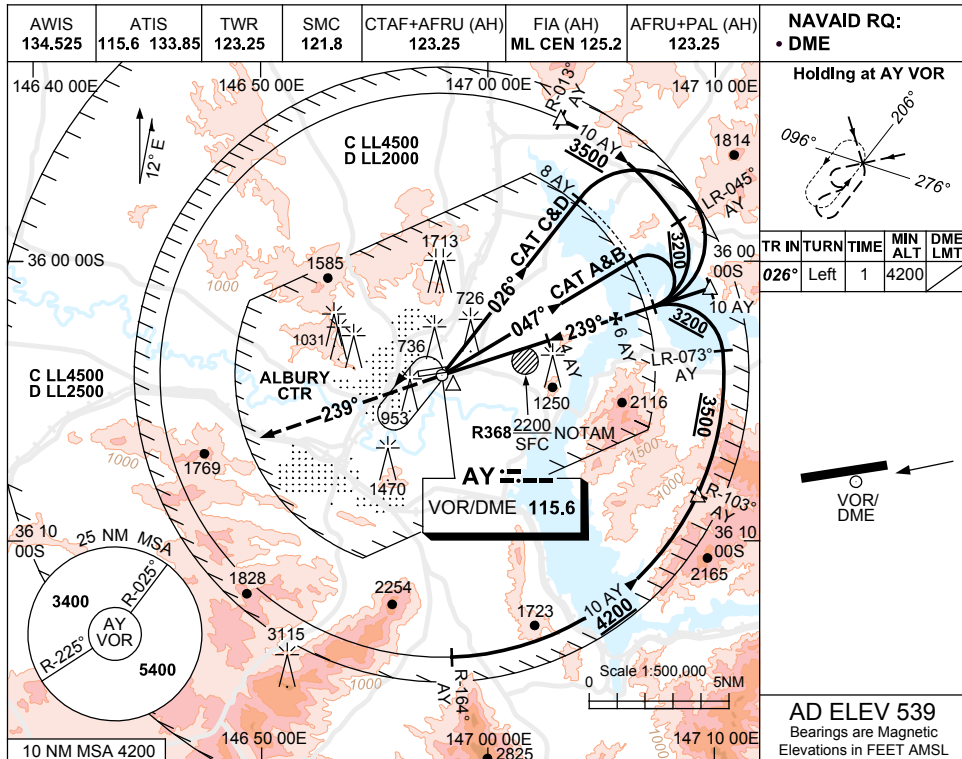


USE QNH

VOR RWY 25
ALBURY, NSW (YMAY)

30 NOV 2023



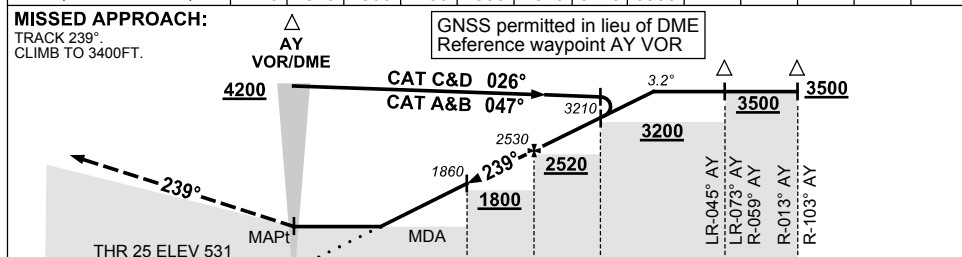
NAVAID RQ:
 • DME

Holding at AY VOR

TR IN	TURN	TIME	MIN ALT	DME LMT
026°	Left	1	4200	

AD ELEV 539
 Bearings are Magnetic
 Elevations in FEET AMSL

DIST TO AY DME	2.3	3	4	5	6	7	8	8.9			
ALT (3.2° APCH PATH)	1270	1520	1860	2190	2530	2870	3210	3500			



NR TO AY DME

CATEGORY	A	B	C	D
S-I VOR/DME	1270 (739-4.2)			
CIRCLING	2050 (1511-2.4)	2220 (1681-4.0)	2270 (1731-5.0)	
ALTERNATE	(2011-4.4)		(2181-6.0)	(2231-7.0)

NOTES

- MAX IAS: BASETURN
CAT C&D : 200KT.
- APCH PATH ANGLE DOES NOT COINCIDE WITH PAPI ON GLIDE SLOPE INDICATION.
- COLOUR: SEE SPEC NOTICES.
- PROC NOT AVBL WHEN R368 ACT UNLESS ADVISED BY ATC.

Changes: CIRCLING & ALTERNATE CAT C MINIMA, NEW LOGO.

MAYVO02-177