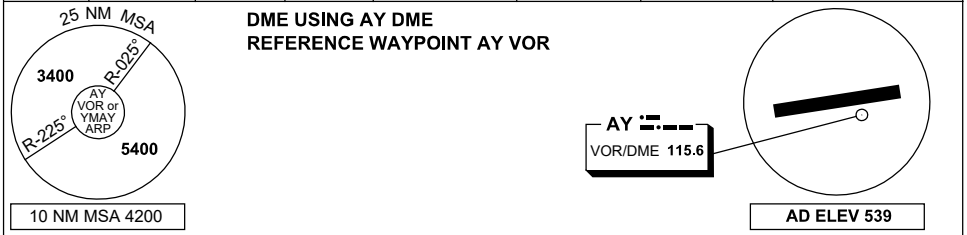


# DME or GNSS ARRIVAL PROCEDURES ALBURY, NSW (YMAY) Page 2

30 NOV 2023

AWIS 134.525	ATIS 115.6 133.85	TWR 123.25	SMC 121.8	CTAF+AFRU (AH) 123.25	FIA (AH) ML CEN 125.2	AFRU+PAL (AH) 123.25	Bearings are Magnetic Elevations in FEET AMSL
-----------------	----------------------	---------------	--------------	--------------------------	--------------------------	-------------------------	--



<p><b>SECTOR D</b></p> <p>180° AY VOR 063°</p>	<p>VOR 3400 3260 3° 2500 2300 MDA MAPt 239° 3400</p>	<p><b>MISSED APPROACH:</b></p> <p>TURN AS APPROPRIATE, TRACK 239°. CLIMB TO 3400FT.</p> <p><b>NOTE:</b> PROC NOT AVBL WHEN R368 ACT UNLESS ADVISED BY ATC.</p>
NM TO AY VOR/DME	25    15    8    5    2    0	
<b>CIRCLING MINIMA</b>	<b>A,B: 2130-2.4    C: 2220-4.0    D: 2270-5.0</b>	
NM TO AY VOR/DME	5.5    5    4    3    2    1.9    1.7    1.5	
ALT (3° APCH PATH)	3400    3260    2940    2620    2300    2270    2220    2130	