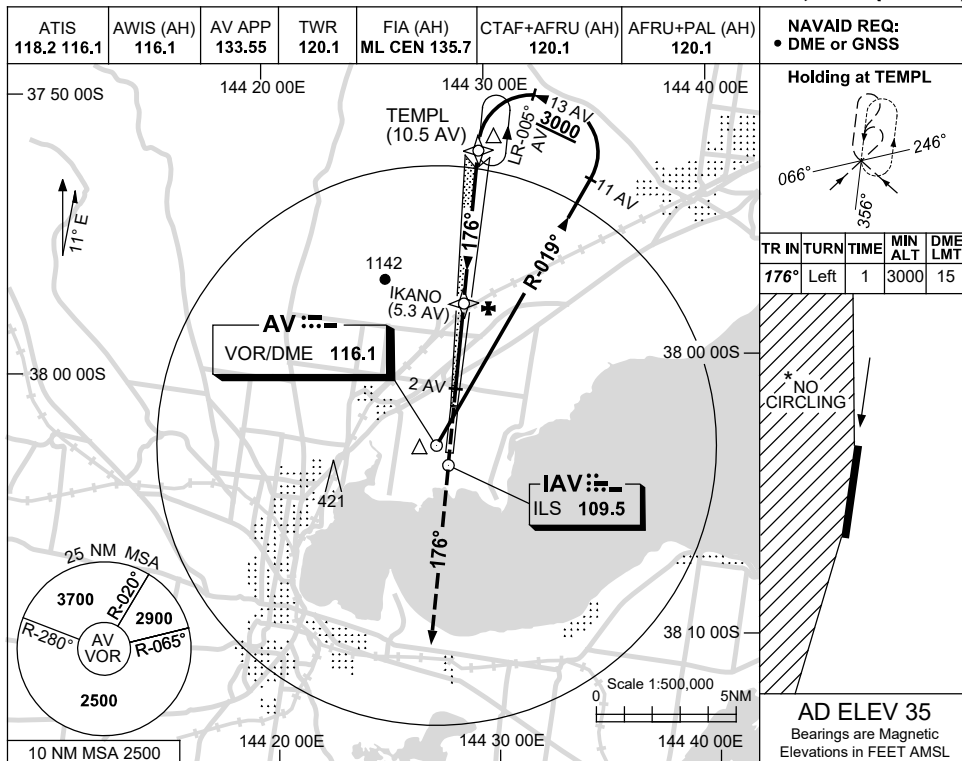


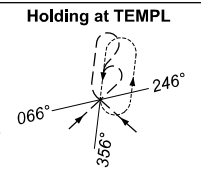
USE QNH

ILS-Y or LOC-Y RWY 18
AVALON, VIC (YMAV)

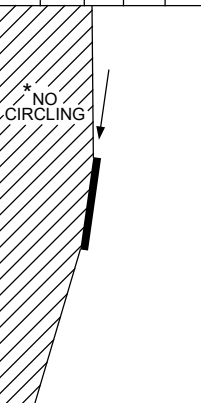
24 MAR 2022



NAVAID REQ:
 • DME or GNSS

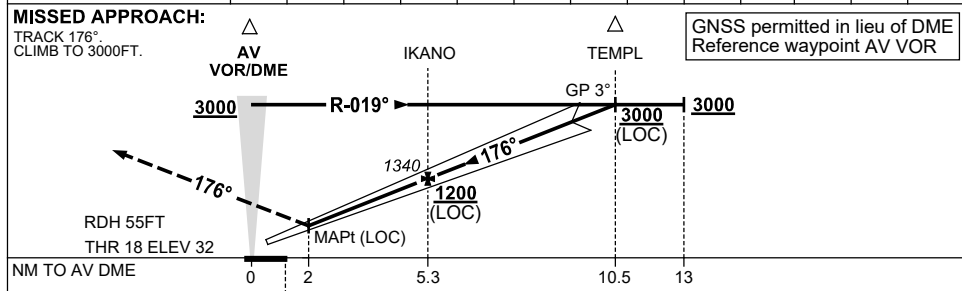


TR	TURN	TIME	MIN ALT	DME LMT
176°	Left	1	3000	15



AD ELEV 35
 Bearings are Magnetic
 Elevations in FEET AMSL

NM TO AV DME	3.1	4	5.3	6	7	8	8.9	9	10	10.5			
ALT (3° APCH PATH)	620	920	1340	1560	1880	2200	2500	2520	2840	3000			



NOTES

- * 1. NO CIRCLING WEST OF RWY 18/36.
- 2. HLDG PATTERN NOT CONTAINED WITHIN CTA.

CATEGORY	A	B	C	D
S-I ILS		390 (358) 2.0 (VIS 1.5 WITH ACTUAL QNH)		
S-I LOC		620 (585-3.3)		
CIRCLING *	660 (625-2.4)		760 (725-4.0)	830 (795-5.0)
ALTERNATE	(1125-4.4)		(1225-6.0)	(1295-7.0)

Changes: AWIS FREQ.

MAV/101-170