

**STANDARD INSTRUMENT DEPARTURES (SID)  
JUSTY THREE DEPARTURE (RNAV)  
AVALON, VIC (YMAV)**

**21 MAR 2024**

ATIS 118.2 116.1	AWIS (AH) 116.1	AV APP 133.55	TWR 120.1	FIA (AH) ML CEN 135.7	CTAF+AFRU (AH) 120.1	AFRU+PAL (AH) 120.1	Bearings are Magnetic Elevations in FEET AMSL
---------------------	--------------------	------------------	--------------	--------------------------	-------------------------	------------------------	--

NOT TO SCALE

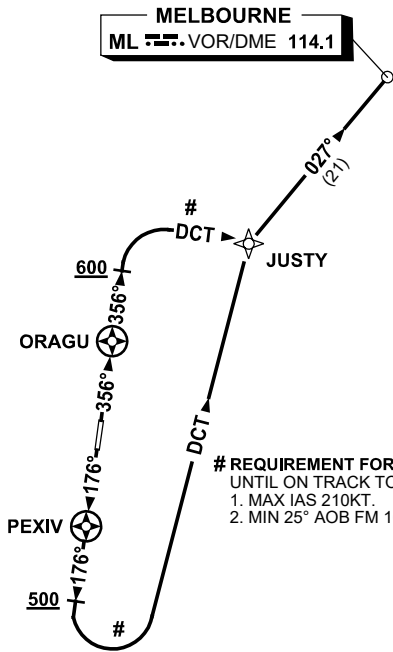


**MELBOURNE**  
ML VOR/DME 114.1

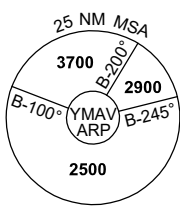
**SPEED**  
MAX IAS 250KT  
BLW 10,000FT

**CLASS D SPEED**  
LIMITS APPLY

**RNP1**



**# REQUIREMENT FOR AIRSPACE CONTAINMENT**  
UNTIL ON TRACK TO JUSTY:  
1. MAX IAS 210KT.  
2. MIN 25° AOB FM 160KT TO 210KT.



10 NM MSA 2500

**JUSTY THREE DEPARTURE**

**RWY 18**

- GRAD 3.3%
- Track 176°
- AT or ABV 500ft but not before PEXIV  
turn LEFT, track DCT to JUSTY #
- Turn RIGHT, track 027° to ML,  
thence as cleared

**RWY 36**

- GRAD 3.3%
- Track 356°
- AT or ABV 600ft but not before ORAGU  
turn RIGHT, track DCT to JUSTY #
- Turn LEFT, track 027° to ML,  
thence as cleared

Changes: DME REFERENCE REMOVED, NEW WAYPOINTS, DEP INSTRUCTION, Editorial.

