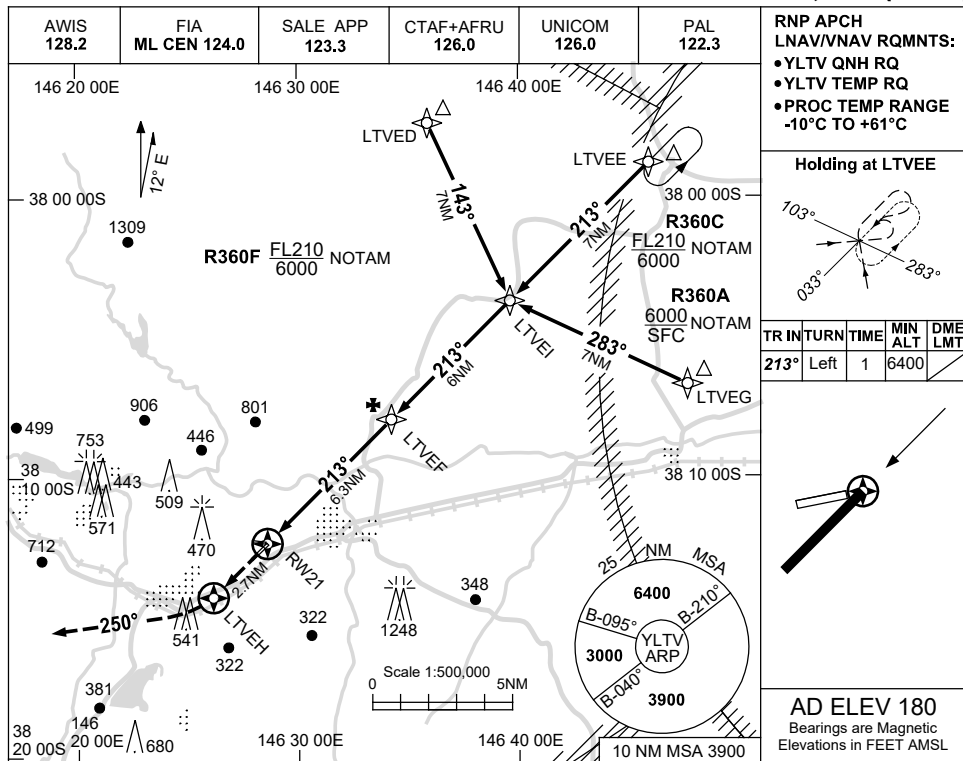


USE QNH

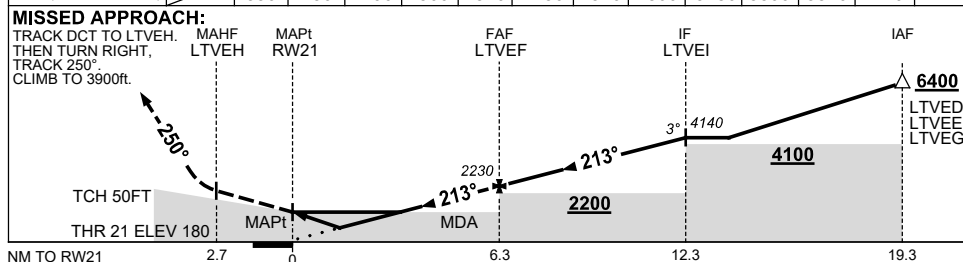
RNP RWY 21

30 NOV 2023

LATROBE VALLEY, VIC (YLTV)



NM TO NEXT WPT	RW21	1	1.6	3	4	5	LTVEF	1	2	3	4	5	LTVEI	
ALT (3° APCH PATH)		550	750	1190	1500	1820	2230	2540	2860	3180	3500	3820	4140	



NOTES

- MAX IAS:
INITIAL : 210KT.
- CAUTION:**
INITIAL & INTERMEDIATE SEGMENT OVERLAP HOLDING & INITIAL SEGMENTS FOR YWSL RNP RWY 09 PROC.
- INITIAL SEGMENTS INFRINGE R360A/C/F; AWY CLR RQ.

CATEGORY	A	B	C	D
LNAV/VNAV	550 (370-2.1)			NOT APPLICABLE
LNAV	750 (570-3.2)			
CIRCLING	980 (800-2.4)		1470 (1290-4.0)	
ALTERNATE	(1300-4.4)		(1790-6.0)	

Changes: R359A-G DELETED, R360A-F ADDED, NOTE 3, Editorial.

LTVGN02-177