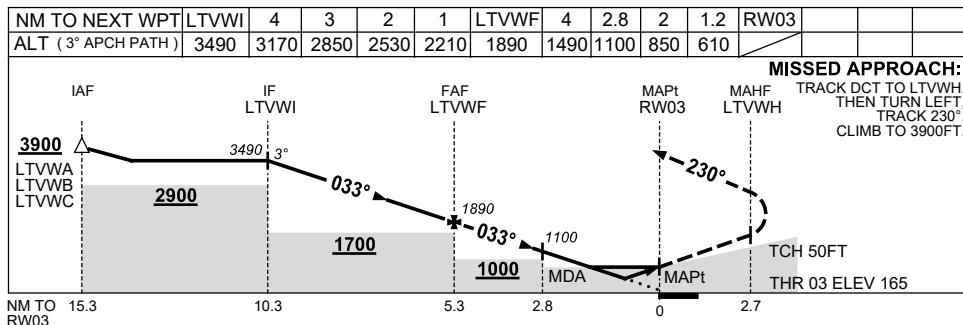
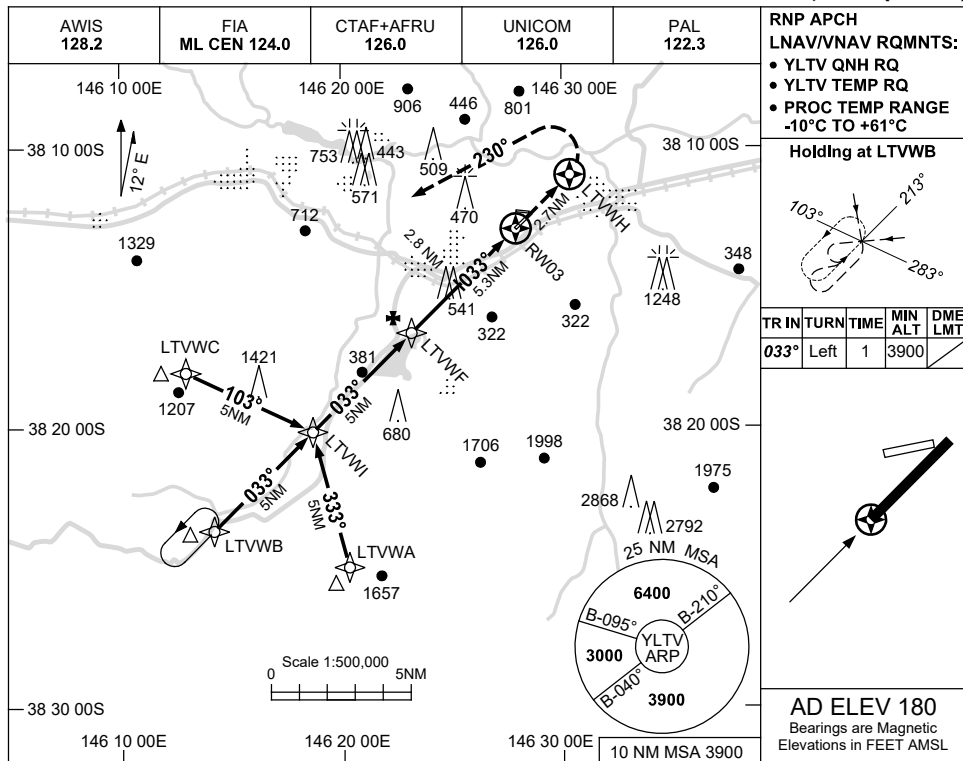


USE QNH

RNP RWY 03

23 MAR 2023

LATROBE VALLEY, VIC (YLTV)



NOTES

CATEGORY	A	B	C	D
LNAV/VNAV	610 (445-2.5)			NOT APPLICABLE
LNAV	850 (685-3.9)			
CIRCLING	980 (800-2.4)		1470 (1290-4.0)	
ALTERNATE	(1300-4.4)		(1790-6.0)	

1. MAX IAS:
INITIAL : 210KT.

Changes: CHART TITLE, PBN SPECIFICATION BOX.

LTVGN01-174