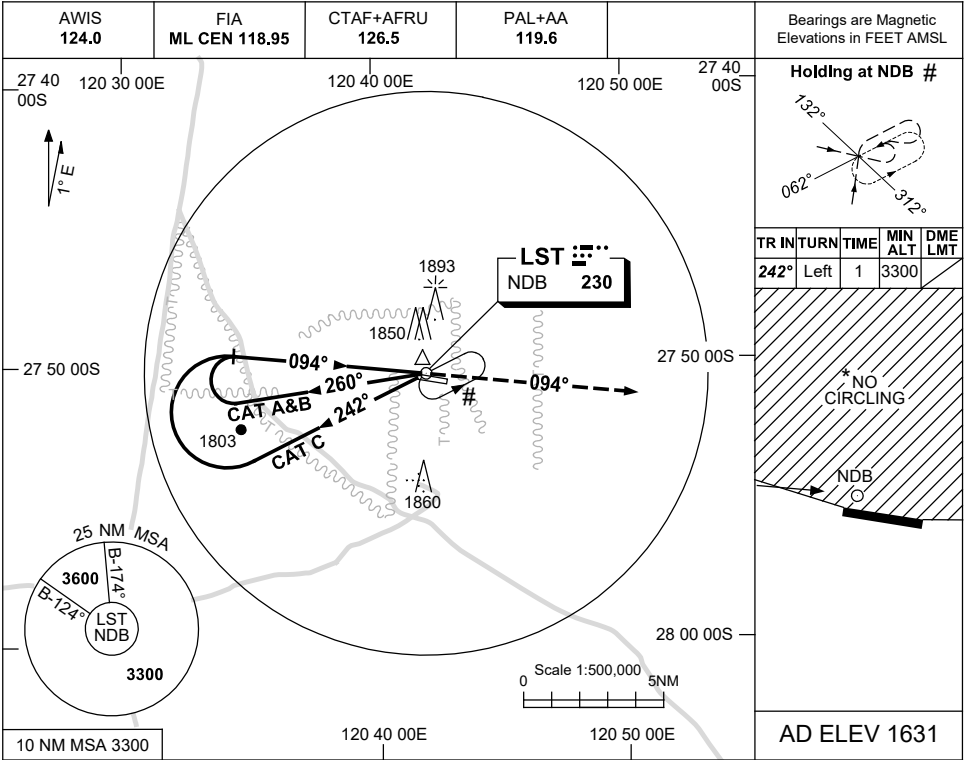


USE QNH

NDB RWY 10

LEINSTER, WA (YLST)

28 NOV 2024



Bearings are Magnetic
Elevations in FEET AMSL

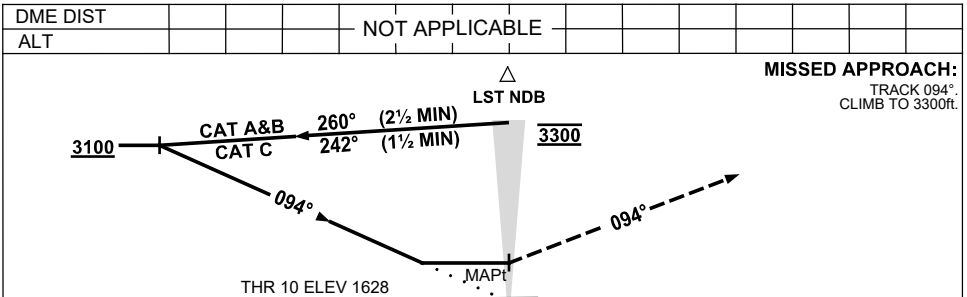
Holding at NDB #

TR IN	TURN	TIME	MIN ALT	DME LMT
242°	Left	1	3300	

* NO CIRCLING

NDB

AD ELEV 1631



- NOTES**
1. MAX IAS:
INITIAL : 210K.T.
 - * 2. NO CIRCLING NORTH OF RWY 10 / 28.
 - # 3. ACFT MUST CTC YBLU PRIOR TO HOLD ON CTAF.
 4. CAUTION: PROC IS OVERLAID BY YBLU RNP RWY 01.

CATEGORY	A	B	C	D
S-I NDB	2320 (689-3.9)			NOT APPLICABLE
CIRCLING *	2350 (719-2.4)	2450 (819-4.0)		
ALTERNATE	(1219-4.4)		(1319-6.0)	

Changes: MSA, THR ELEV, Editorial. LSTNB01-181