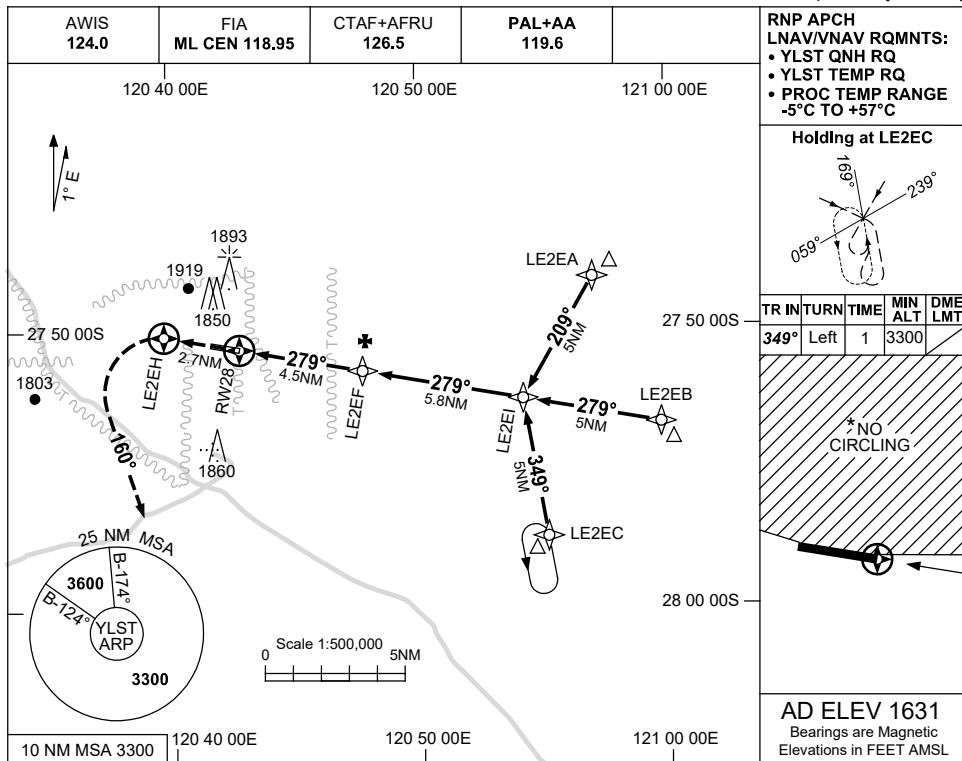


USE QNH

RNP RWY 28  
LEINSTER, WA (YLST)

28 NOV 2024



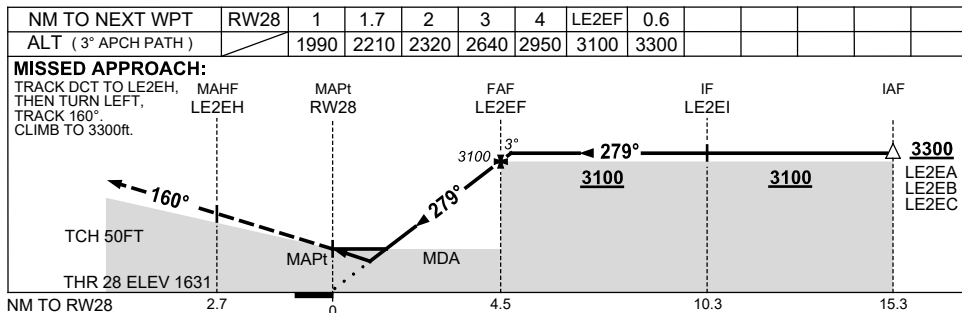
**RNP APCH**  
LNAV/VNAV RQMNTS:  
• YLST QNH RQ  
• YLST TEMP RQ  
• PROC TEMP RANGE  
-5°C TO +57°C

**Holding at LE2EC**

TR	IN	TURN	TIME	MIN ALT	DME LMT
349°	Left	1	3300		

\* NO CIRCLING

**AD ELEV 1631**  
Bearings are Magnetic  
Elevations in FEET AMSL



**NOTES**

CATEGORY	A	B	C	D
LNAV/VNAV	1990 (359-2.0)			NOT APPLICABLE
LNAV	2210 (579-3.3)			
CIRCLING *	2350 (719-2.4)		2450 (819-4.0)	
ALTERNATE	(1219-4.4)		(1319-6.0)	

- MAX IAS: INITIAL : 230KT.
- NO CIRCLING NORTH OF RWY 10 / 28.
- CAUTION: PROC IS OVERLAID BY YBLU RNP RWY 01.

Changes: MSA, WPT NAMING CONVENTION, THR ELEV, Editorial.

LSTGN02-181