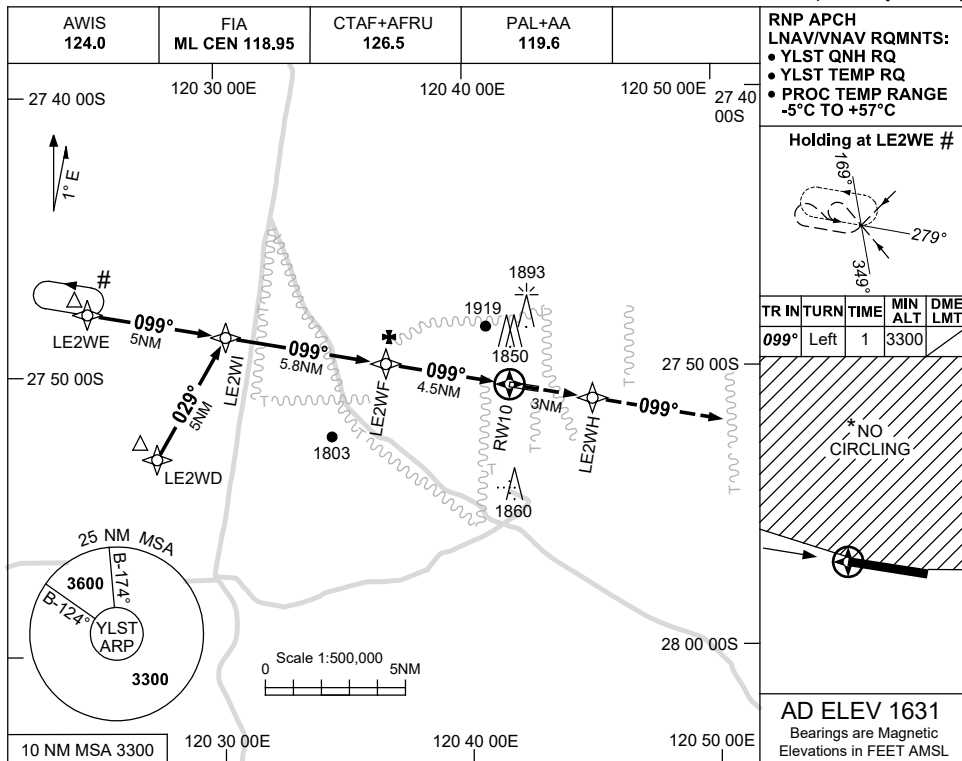


USE QNH

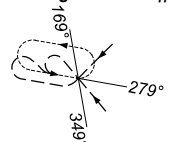
RNP RWY 10
LEINSTER, WA (YLST)

28 NOV 2024

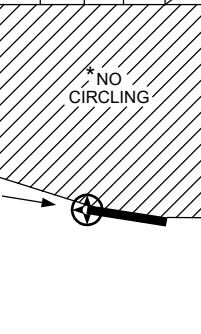


RNP APCH
LNAV/VNAV RQMNTS:
• YLST QNH RQ
• YLST TEMP RQ
• PROC TEMP RANGE
-5°C TO +57°C

Holding at LE2WE #

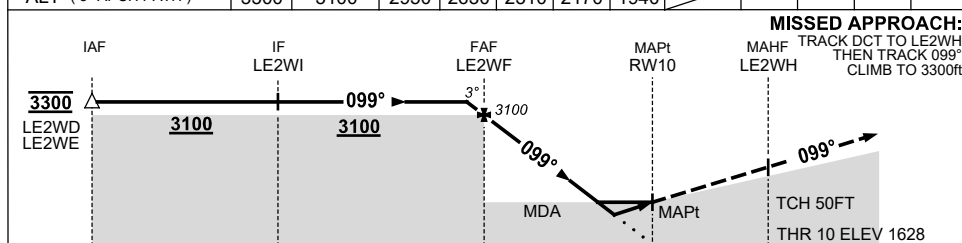


TR IN	TURN	TIME	MIN ALT	DME LMT
099°	Left	1	3300	



AD ELEV 1631
Bearings are Magnetic
Elevations in FEET AMSL

NM TO NEXT WPT	0.6	LE2WF	4	3	2	1.6	0.8	RW10
ALT (3° APCH PATH)	3300	3100	2950	2630	2310	2170	1940	



MISSED APPROACH:
TRACK DCT TO LE2WH,
THEN TRACK 099°
CLIMB TO 3300ft.

NM TO RW10	15.3	10.3	4.5	0	3
------------	------	------	-----	---	---

NOTES

- MAX IAS: INITIAL : 230KT.
- NO CIRCLING NORTH OF RWY 10 / 28.
- ACFT MUST CTC YBLU PRIOR TO HOLD ON CTAF.
- CAUTION: PROC IS OVERLAID BY YBLU RNP RWY 01.

CATEGORY	A	B	C	D
LNAV/VNAV	1940 (312-1.7)			NOT APPLICABLE
LNAV	2170 (539-3.1)			
CIRCLING*	2350 (719-2.4)		2450 (819-4.0)	
ALTERNATE	(1219-4.4)		(1319-6.0)	

Changes: MSA, WPT NAMING CONVENTION, REMOVED LERWG SEGMENT, THR ELEV, Editorial.

LSTGN01-181