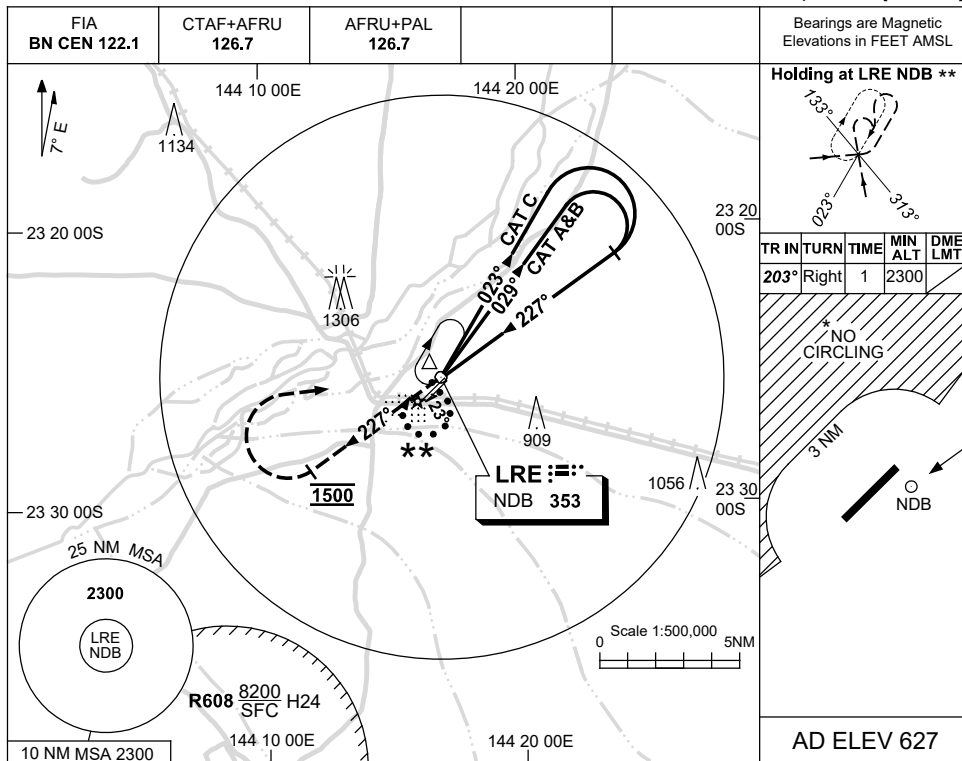


USE QNH

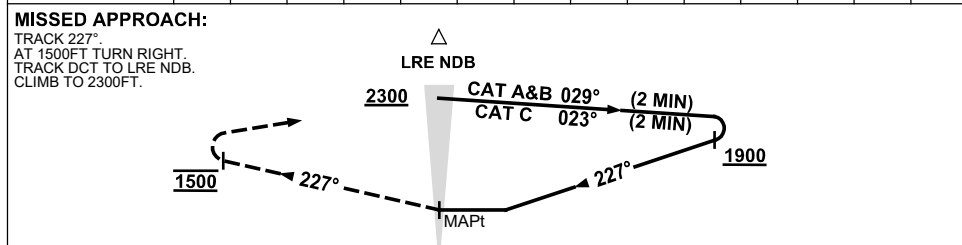
NDB-A

15 AUG 2019

LONGREACH, QLD (YLRE)



DME DIST			NOT APPLICABLE						
ALT									



NOTES

1. MAX IAS:
 INITIAL : 210KT,
 80/260 REVERSAL: 210KT.
- *2. NO CIRCLING N
 OF RWY 04/22
 BEYOND 3NM.
- **3. PROC TURN
 (80°/260°)REQD TO
 JOIN PROC FROM
 HOLD.
4. AWIS PHONE
 07 3564 3723

CATEGORY	A	B	C	D
				NOT APPLICABLE
CIRCLING *	1250 (623-2.4)		1410 (783-4.0)	
ALTERNATE	(1123-4.4)		(1283-6.0)	

Changes: MAG VAR, TRACK BRGS, CO-ORD FORMAT, CAT C CIRCLING NMN, NOTE 4, Editorial.

LREN01-160