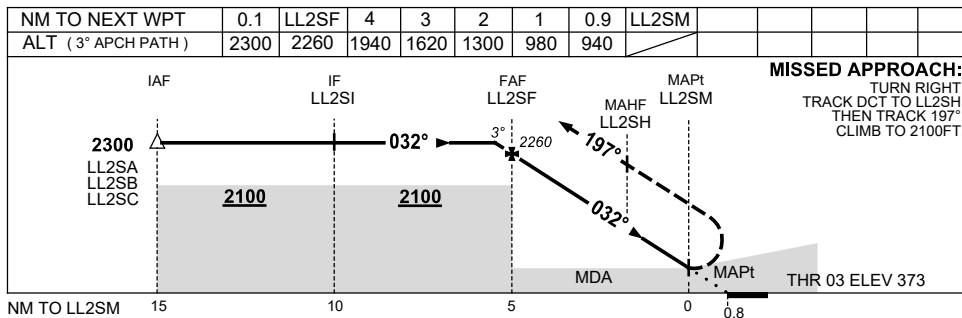
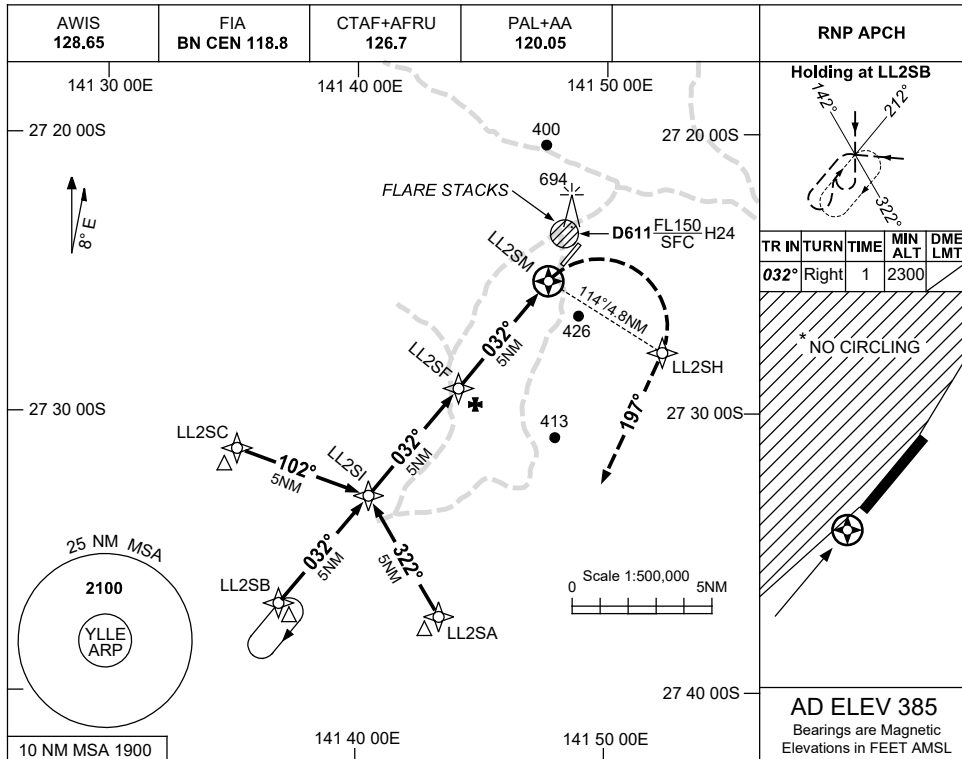


USE QNH

RNP RWY 03  
BALLERA, QLD (YLLE)

13 JUN 2024



**NOTES**

CATEGORY	A	B	C	D
LNAV	940 (567-3.2)			NOT APPLICABLE
CIRCLING *	990 (605-2.4)		1090 (705-4.0)	
ALTERNATE	(1105-4.4)		(1205-6.0)	

- MAX IAS:  
INITIAL : 210KT.  
MISSED APCH TURN : 200KT.
- NO CIRCLING WEST OF RWY 03/21.

Changes: WAYPOINT NAMES, 694FT OBST, Editorial.

LLEGN01-179