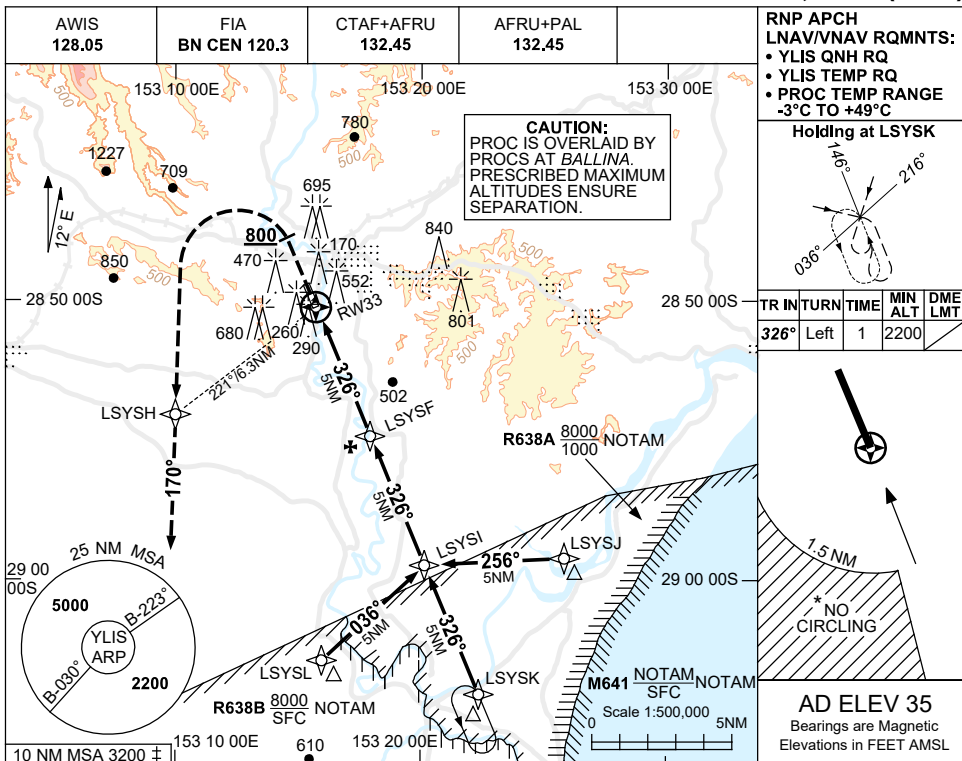


USE QNH

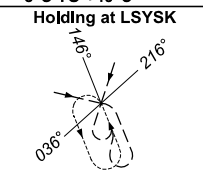
RNP RWY 33

LISMORE, NSW (YLIS)

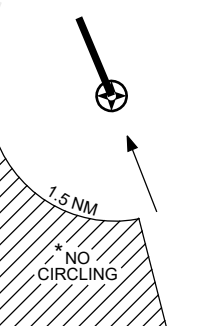
28 NOV 2024



RNP APCH  
LNAV/VNAV RQMNTS:  
• YLIS QNH RQ  
• YLIS TEMP RQ  
• PROC TEMP RANGE  
-3°C TO +49°C

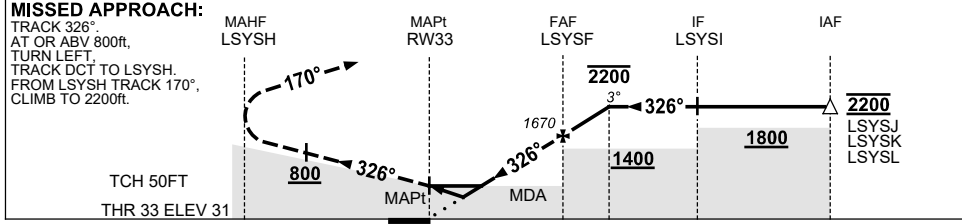


TR IN	TURN	TIME	MIN ALT	DME LMT
326°	Left	1	2200	



AD ELEV 35  
Bearings are Magnetic  
Elevations in FEET AMSL

NM TO NEXT WPT	RW33	1.6	2.2	3	4	LSYSF	1	1.7			
ALT (3° APCH PATH)		590	790	1040	1350	1670	1990	2200			



NM TO RW33

- NOTES**
- MAX IAS:  
INITIAL : 210KT.  
MISSED APCH  
TURN : 190KT.
  - NO CIRCLING WEST OF RWY 15 / 33 BEYOND 1.5NM.
  - 10 NM MSA IS A COMBINED AREA FOR YLIS, YBNA.
  - PROCEDURE NOT AVBL WHEN R638 ACTIVE.
  - COLOR: SEE SPEC NOTICES.

CATEGORY	A	B	C	D
LNAV/VNAV		590 (559-3.2)		NOT APPLICABLE
LNAV		790 (755-4.3)		
CIRCLING*	1060 (1025-2.4)		1310 (1275-4.0)	
ALTERNATE	(1525-4.4)		(1775-6.0)	

Changes: M641 REPLACES R638D, Editorial. LISGN02-181