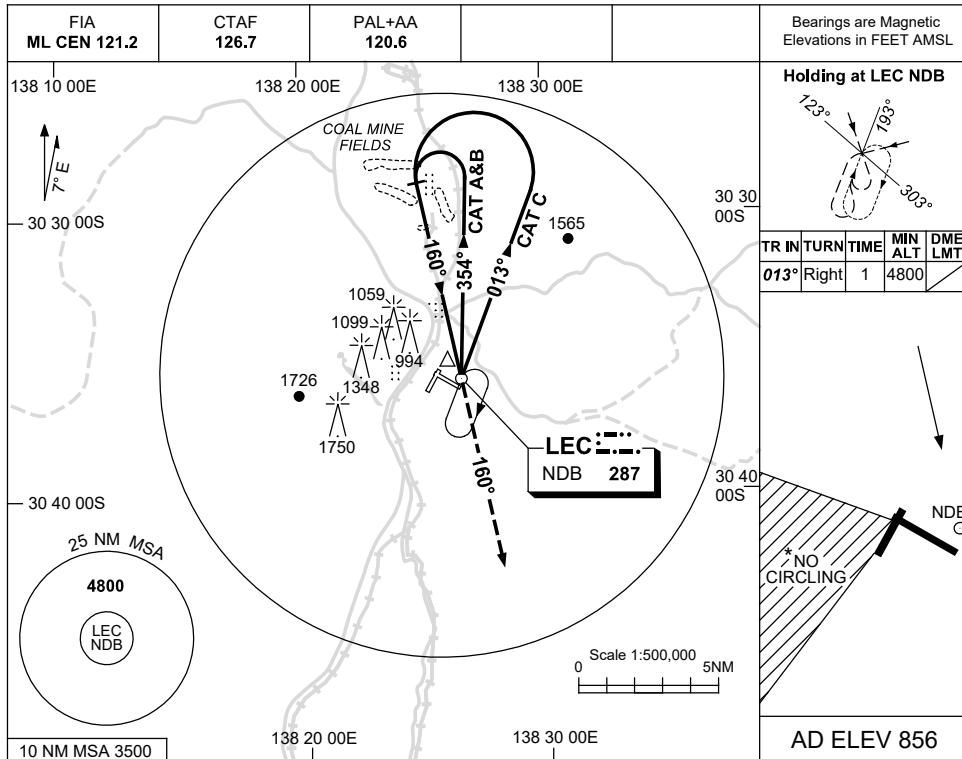


USE QNH

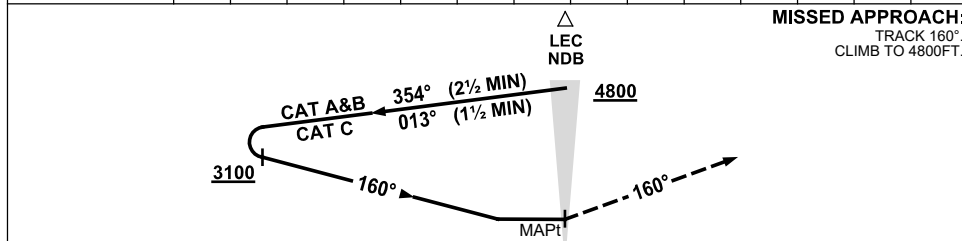
NDB-A

16 JUN 2022

LEIGH CREEK, SA (YLEC)



DME DIST	NOT APPLICABLE							
ALT								



**NOTES**

CATEGORY	A	B	C	D
CIRCLING *	1760 (904-2.4)	1930 (1074-4.0)		NOT APPLICABLE
ALTERNATE	(1404-4.4)	(1574-6.0)		

1. MAX IAS:  
INITIAL :  
CAT C 210KT.
- \* 2. NO CIRCLING IN SECTOR SW OF RWYS 02/20 AND 11/29.
3. AWIS (PHONE)  
08 8150 3807

Changes: PAL+AA.

LECNB01-171