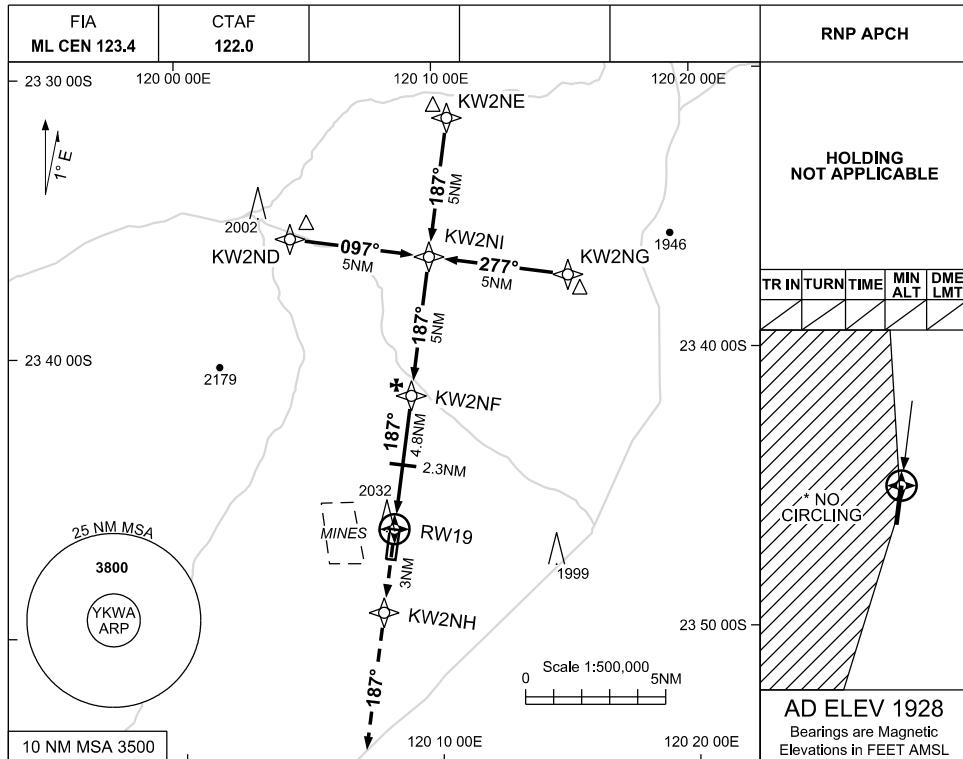


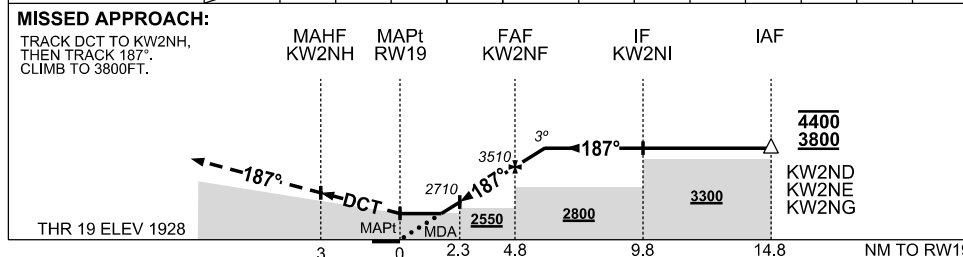
30 NOV 2023

USE QNH

RNP RWY 19
KARLAWINDA MINE, WA (YKWA)



NM TO NEXT WPT	RW19	1.5	2	3	4	KW2NF	0.9						
ALT (3° APCH PATH)		2470	2610	2930	3250	3510	3800						



NOTES

1. MAX IAS: INITIAL: 210KT
- *2. NO CIRCLING WEST OF RWY 01/19
3. CAUTION: PROC OVERLAID BY PROCS AT YNWN. PRESCRIBED MAXIMUM ALTITUDES ENSURE SEPARATION
3. CAUTION: BLASTING REFER ERSA

CATEGORY	A	B	C	D
LNAV	2470 (542 - 3.1)			NOT AUTHORISED
* CIRCLING	2550 (622-2.4)		2690(762-4.0)	
ALTERNATE	(1122-4.4)		(1262-6.0)	

Changes: CHART TITLE, PBN SPECIFICATION BOX, EDITORIAL

KWAGN02-177