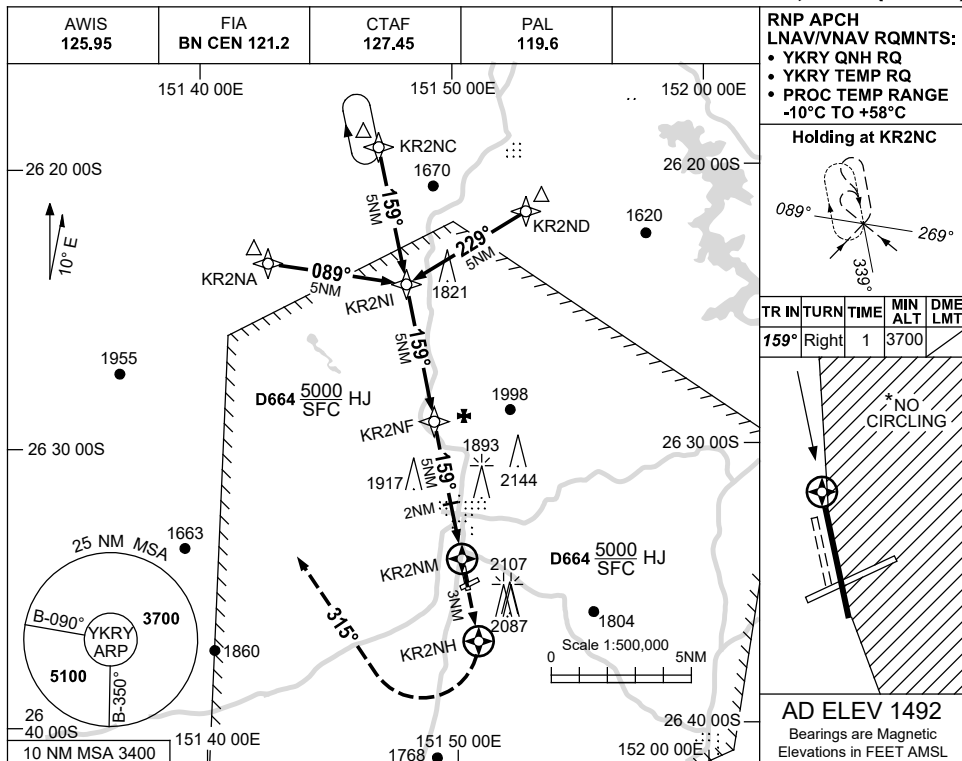


USE QNH

RNP RWY 16

**KINGAROY, QLD (YKRY)**

13 JUN 2024



**RNP APCH LNAV/VNAV RQMNTS:**

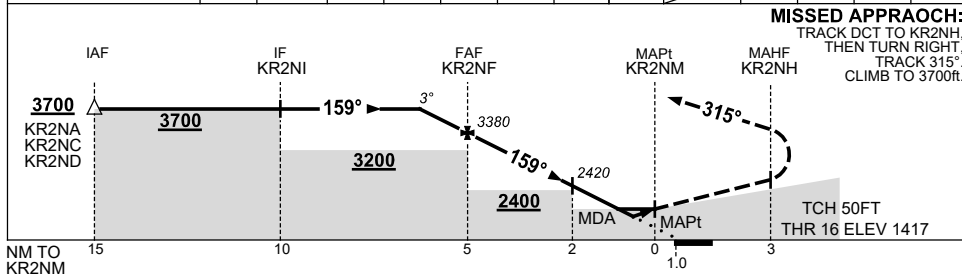
- YKRY QNH RQ
- YKRY TEMP RQ
- PROC TEMP RANGE -10°C TO +58°C

**Holding at KR2NC**

TR	IN	TURN	TIME	MIN ALT	DME LMT
159°	Right		1	3700	

**AD ELEV 1492**  
Bearings are Magnetic  
Elevations in FEET AMSL

NM TO NEXT WPT	1	KR2NF	4	3	2	1	0.9	0.6	KR2NM
ALT (3° APCH PATH)	3700	3380	3060	2740	2420	2100	2060	1980	



**NOTES**

CATEGORY	A	B	C	D
LNAV/VNAV		<b>1980</b> (563-3.2)		NOT APPLICABLE
LNAV		<b>2060</b> (643-3.7)		
CIRCLING*	<b>2260</b> (768-2.4)		<b>2530</b> (1038-4.0)	
ALTERNATE	(1248-4.4)		(1538-6.0)	

1. MAX IAS: INITIAL : 210KT.
- \* 2. NO CIRCLING IN SECTOR EAST OF RWY 16/34.

Changes: 2107FT OBST, CIRCLING & ALTN MINIMA, WPT NAMING CONVENTION, MNM ALT.

KRYGN01-179