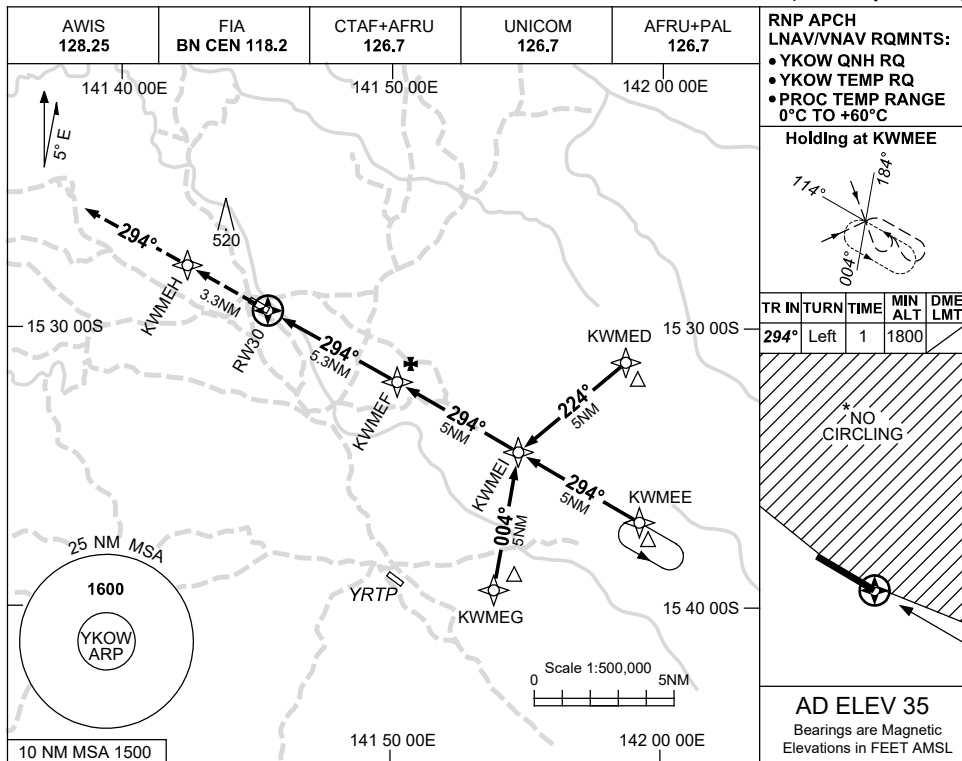


USE QNH

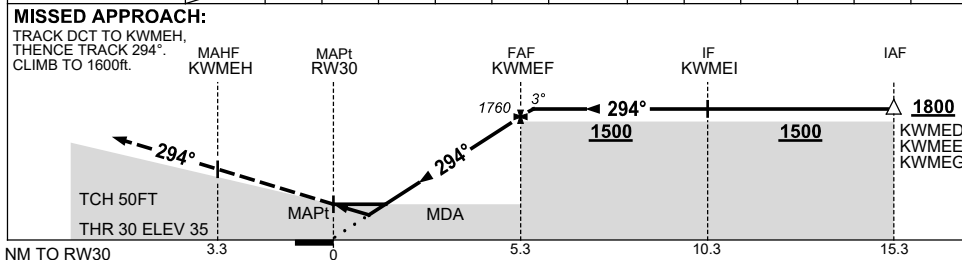
RNP RWY 30

5 SEP 2024

**KOWANYAMA, QLD (YKOW)**



NM TO NEXT WPT	RW30	0.8	1.5	2	3	4	KWMEF	0.1					
ALT (3° APCH PATH)		350	550	720	1040	1360	1760	1800					



**NOTES**

CATEGORY	A	B	C	D
LNAV/VNAV	350 (315-1.8)			<b>NOT APPLICABLE</b>
LNAV	550 (515-2.9)			
CIRCLING*	630 (595-2.4)		730 (695-4.0)	
ALTERNATE	(1095-4.4)		(1195-6.0)	

1. MAX IAS: INITIAL : 210KT.
- \* 2. NO CIRCLING NORTH OF RWY 12 & RWY 30.

Changes: CTAF+AFRU, Editorial.

KOWGN02-180