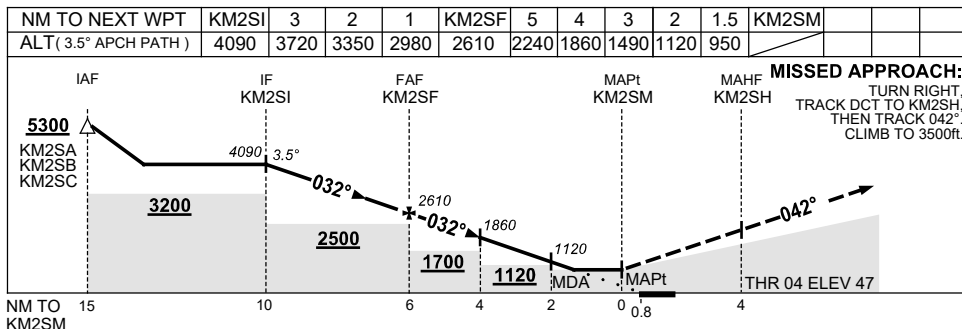
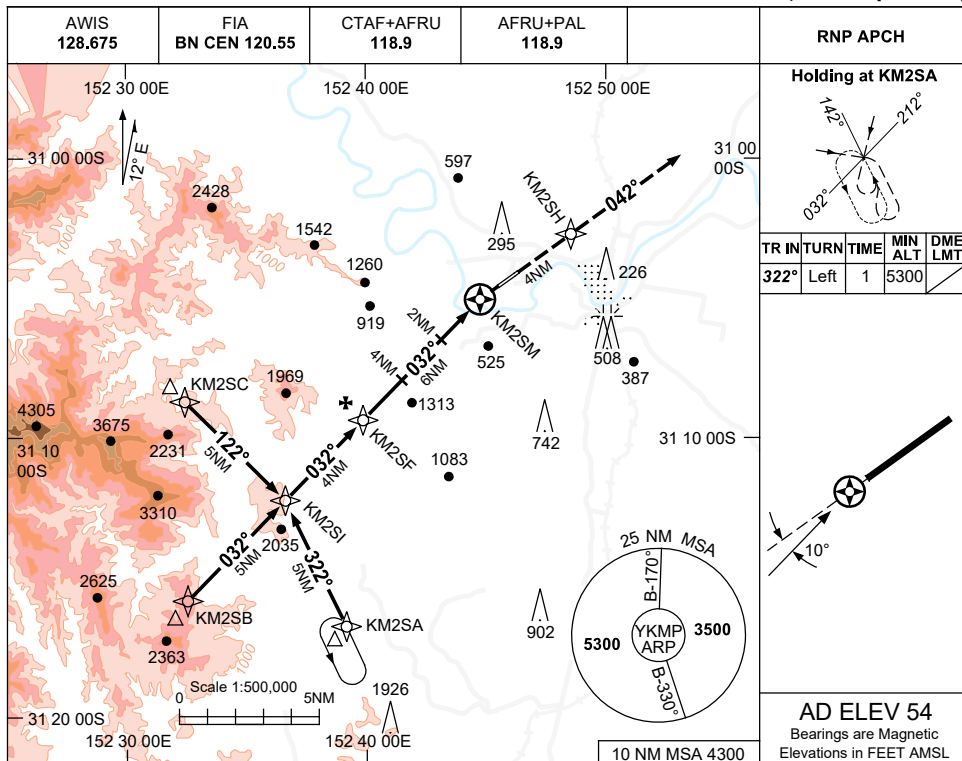


USE QNH

RNP RWY 04  
**KEMPSEY, NSW (YKMP)**

13 JUN 2024



CATEGORY	A	B	C	D
LNAV	950 (896-4.4)			NOT APPLICABLE
CIRCLING	950 (896-2.4)		1420(1366-4.0)	
ALTERNATE	(1396-4.4)		(1866-6.0)	

- NOTES**
- MAX IAS: INITIAL : 210KT.
  - PJE WI 5NM HJ.
  - COLOUR: SEE SPEC NOTICES

Changes: LNAV MINIMA, VIS, CIRCLING MINIMA, ALTERNATE MINIMA, MOCA.

KMPGN02-179