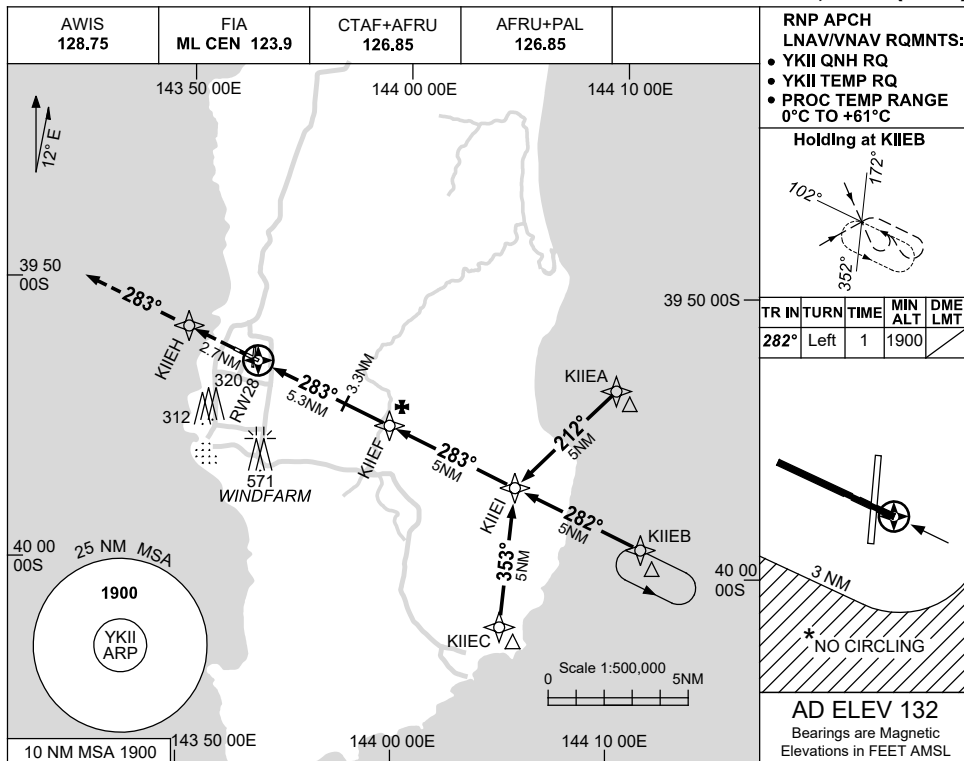


USE QNH

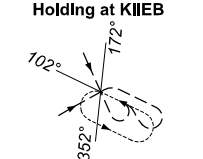
RNP RWY 28

KING ISLAND, TAS (YKII)

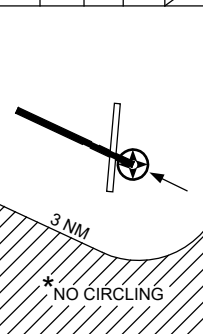
15 JUN 2023



RNP APCH
LNAV/VNAV RQMTS:
 • YKII QNH RQ
 • YKII TEMP RQ
 • PROC TEMP RANGE
 0°C TO +61°C

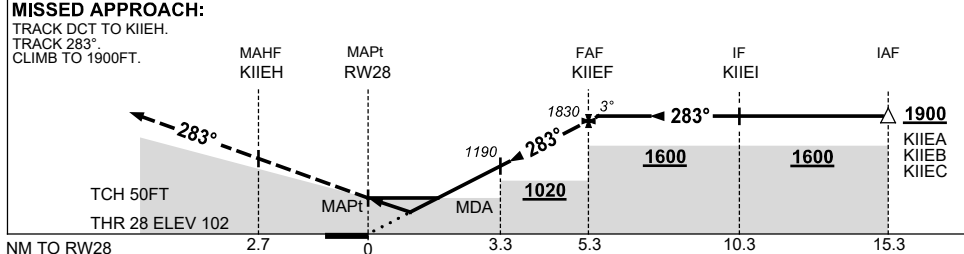


TR	INTURN	TIME	MIN ALT	DME LMT
282°	Left	1	1900	



AD ELEV 132
 Bearings are Magnetic
 Elevations in FEET AMSL

NM TO NEXT WPT	RW28	1.2	1.8	2	3	4	KIIEF	0.2				
ALT (3° APCH PATH)		530	730	790	1110	1430	1830	1900				



NOTES

CATEGORY	A	B	C	D
LNAV/VNAV	530 (428-2.4)			NOT APPLICABLE
LNAV	730 (628-3.6)			
CIRCLING *	840 (708-2.4)		940 (808-4.0)	
ALTERNATE	(1208-4.4)		(1308-6.0)	

- MAX IAS:
INITIAL : 210KT
- * NO CIRCLING
BEYOND 3NM
SOUTH OF
RWY 10/28.

Changes: CHART TITLE, PBN SPECIFICATION BOX, Editorial. KIIGN01-175