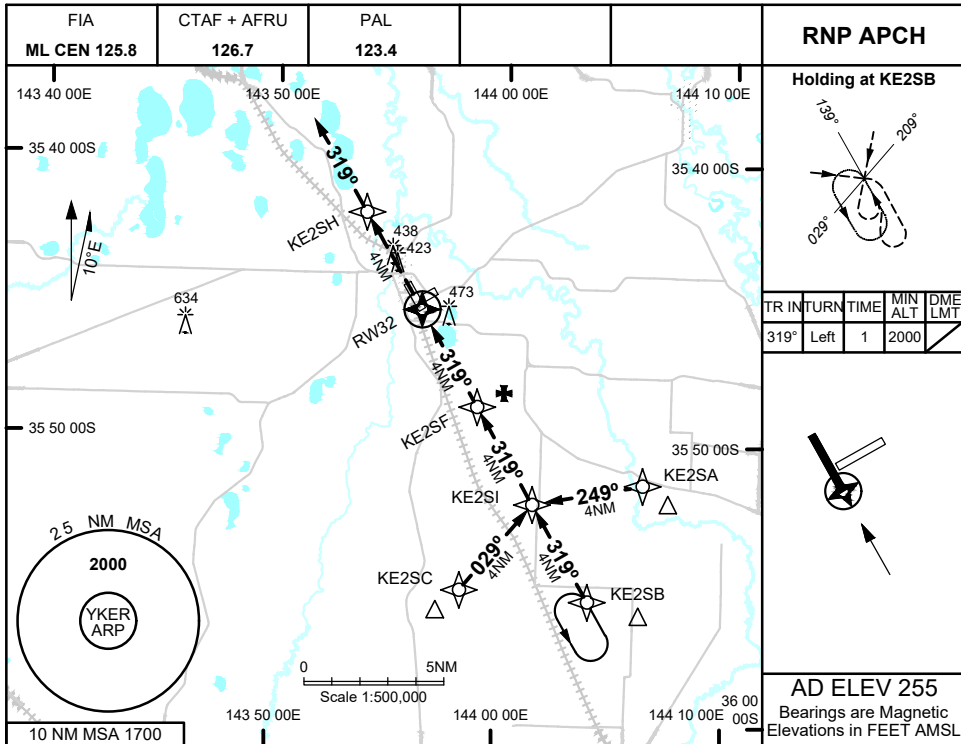
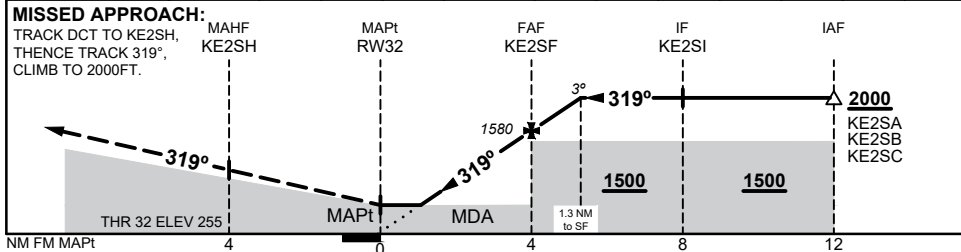


5 SEP 2024



NM TO NEXT WPT	RWY32	1.5	2	3	KE2SF	1	1.3				
ALT (3° APCH PATH)		780	940	1260	1580	1900	2000				



CATEGORY	A	B	C	D
LNAV	780 (525 - 3.0)		NOT APPLICABLE	
CIRCLING	870 (615 - 2.4)			
ALTERNATE	(1115 - 4.4)			

Changes: 10 NM MSA, OBST 634FT, Editorial

KERGN01-180