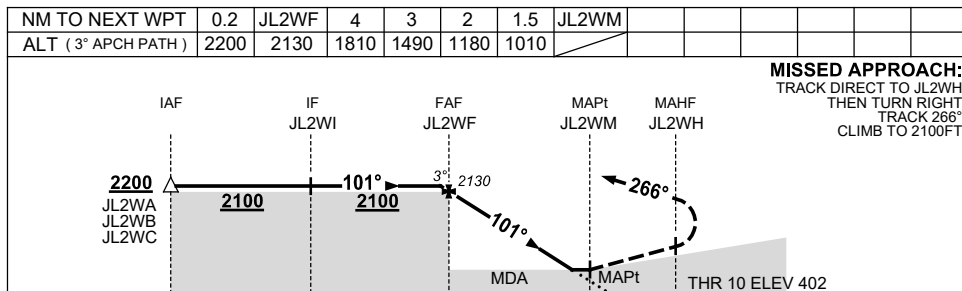
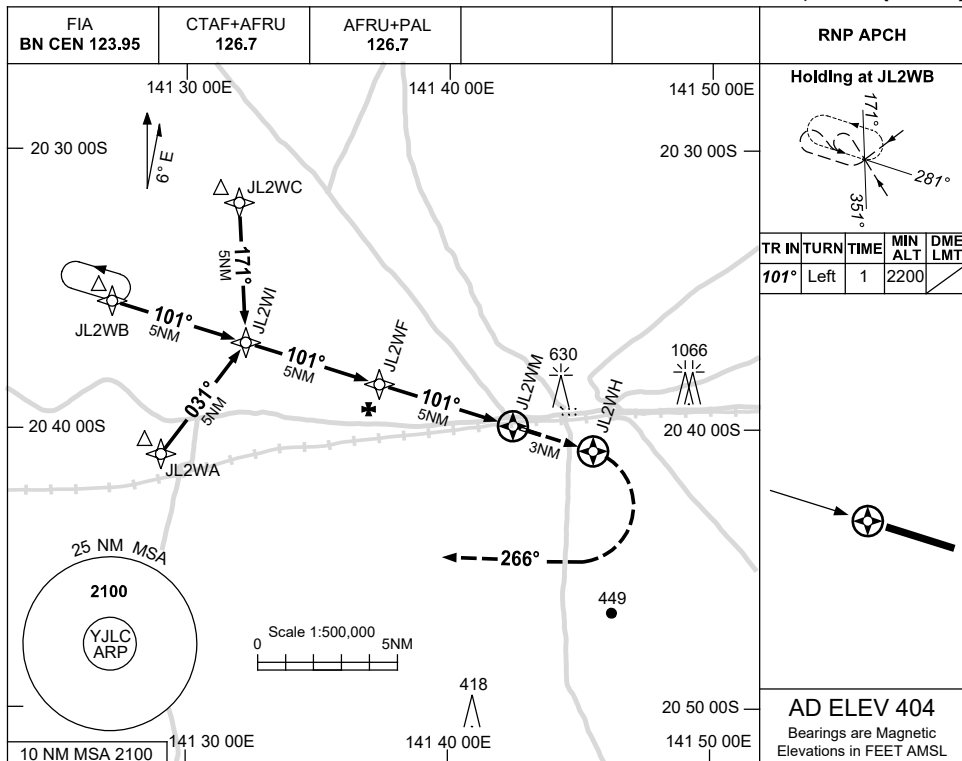


USE QNH

RNP RWY 10
JULIA CREEK, QLD (YJLC)

15 JUN 2023



CATEGORY	A	B	C	D
LNAV	1010 (606-3.4)			NOT APPLICABLE
CIRCLING	1040 (636-2.4)	1140 (736-4.0)		
ALTERNATE	(1136-4.4)	(1236-6.0)		

- NOTES**
- MAX IAS:
INITIAL : 210KT.
 - AWIS PHONE
07 3564 3796

Changes: AWIS PH.

JLCGN01-175