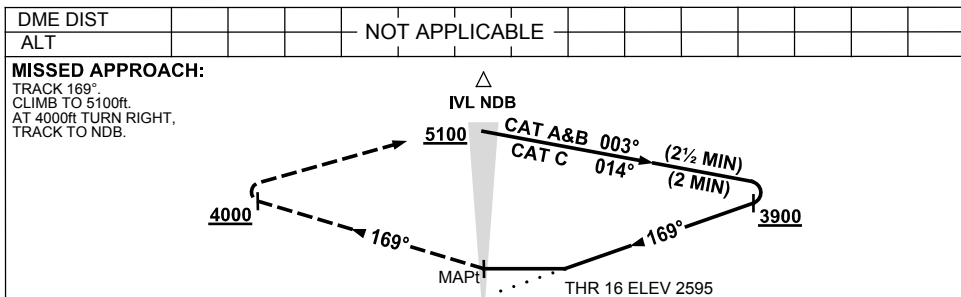
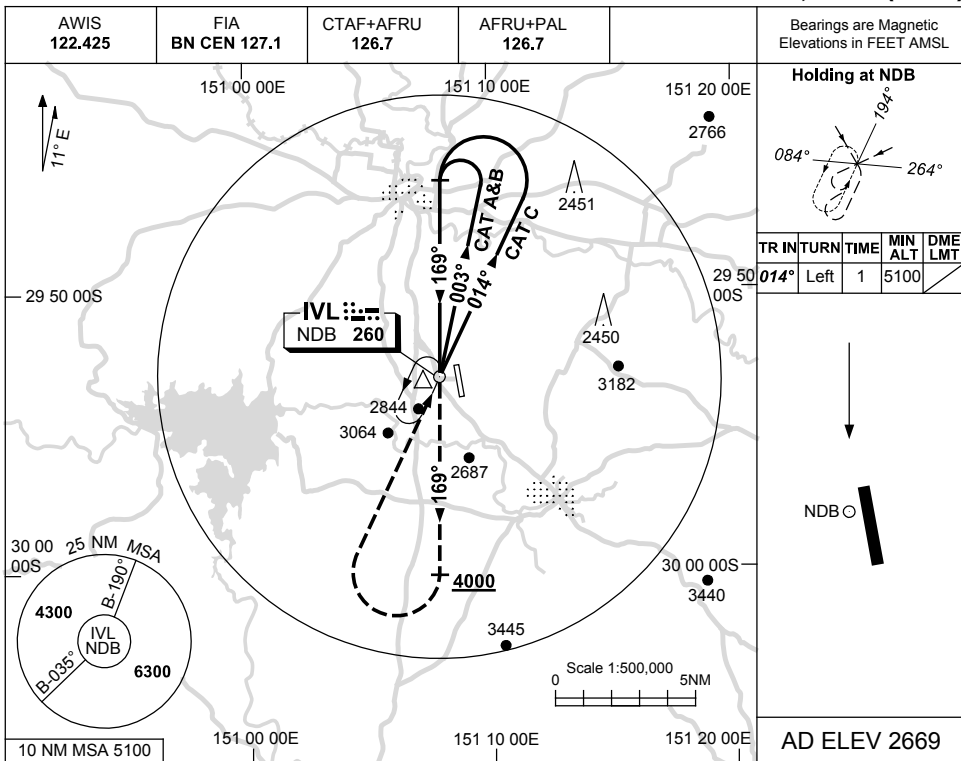


USE QNH

NDB RWY 16  
**INVERELL, NSW (YIVL)**

5 SEP 2024



**NOTES**

CATEGORY	A	B	C	D
S-I NDB	<b>3220</b> (625-3.6)			NOT APPLICABLE
CIRCLING	<b>3350</b> (681-2.4)	<b>3720</b> (1051-4.0)		
ALTERNATE	(1181-4.4)	(1551-6.0)		

- MAX IAS:  
 HOLDING : 210KT.  
 INITIAL : 210KT.

Changes: AD ELEV.

IVLNB01-180