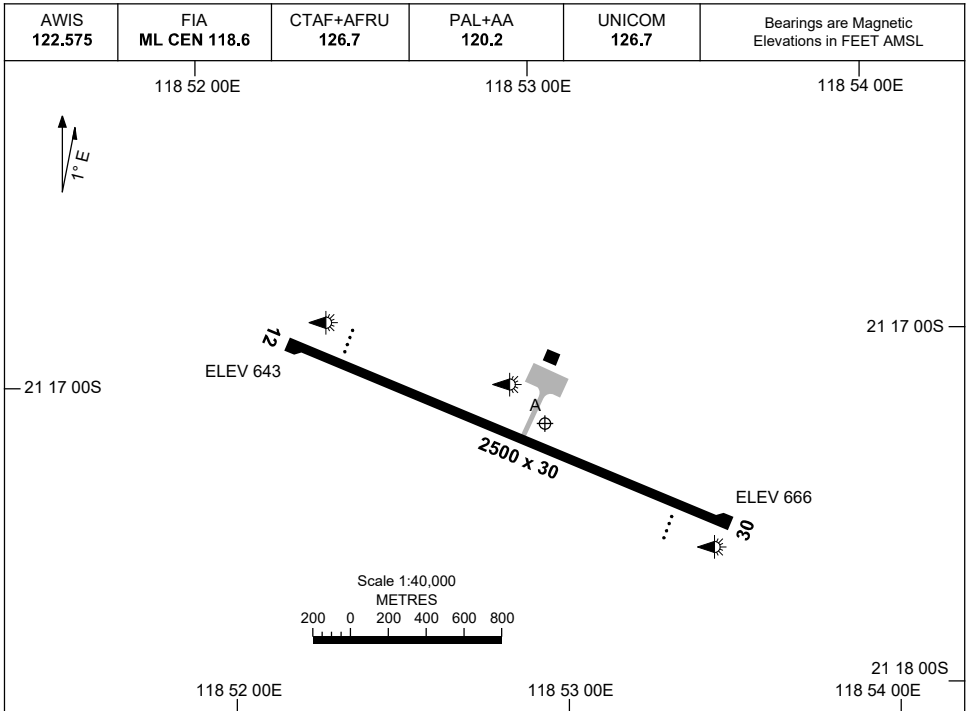


1 DEC 2022

AD ELEV 666  
21 17 12S 118 52 59E

AERODROME CHART  
**IRON BRIDGE MINE, WA (YIBO)**



	<b>AERODROME LIGHTING</b>
<b>RWY</b>	TAXIWAY : BLUE EDGE RL : PAL+AA 120.2, SDBY (20 SEC)
<b>12</b> <sup>115</sup>	PAPI 3.0° 53FT LIRL PTBL
<sup>295</sup> <b>30</b>	PAPI 3.0° 53FT LIRL PTBL

**NOTES**

1. AFRU NOT AVBL ON GROUND.
2. AWIS RQ 3 ONE-SECOND PULSES TO ACTIVATE.
3. ALL LIGHTING MANUALLY ACTIVATED BY ARO 30 MIN PRIOR TO SCHEDULED ARRIVAL AND DEACTIVATED 15 MIN AFTER DEPARTURE.
4. RWY 12/30 PTBL LIGHTING AVBL WITH 90MIN PN.

Changes: NOTE 4.

IBOARD01-173