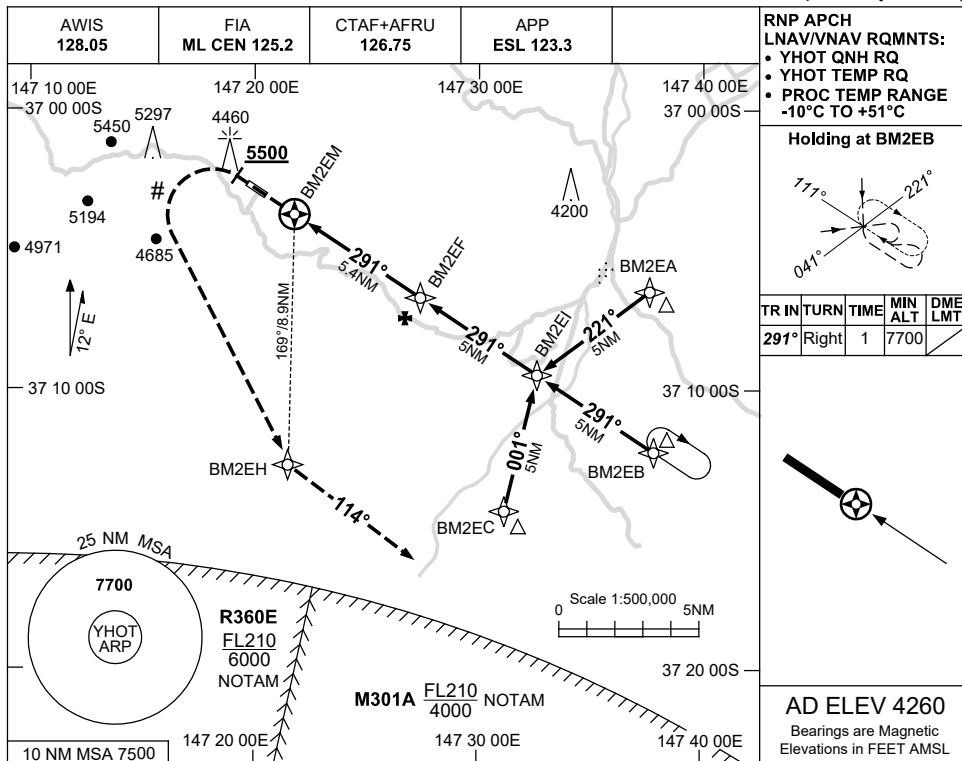


USE QNH

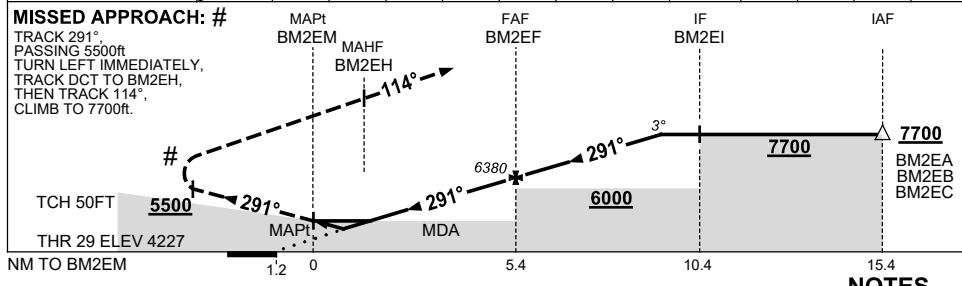
RNP RWY 29

13 JUN 2024

MOUNT HOTHAM, VIC (YHOT)



NM TO NEXT WPT	BM2EM	0.1	0.4	0.7	1	2	3	4	BM2EF	1	2	3	4.1
ALT (3° APCH PATH)		4700	4800	4890	4990	5300	5620	5940	6380	6700	7020	7330	7700



CATEGORY	A	B	C	D
LNAV/VNAV (2.5% MAP)		4890 (663-3.8)		NOT APPLICABLE
LNAV/VNAV # (3.3% MAP)		4700 (473-2.7)		
LNAV (2.5% MAP)		4990 (763-4.4)		
LNAV # (3.3% MAP)		4800 (573-3.3)		
CIRCLING	5450 (1190-2.4)		5880 (1620-4.0)	
ALTERNATE		(1690-4.4)	(2120-6.0)	

- NOTES**
- MAX IAS:
INITIAL : 210KT.
MAP TURN : 210KT.
 - MIN MAP GRAD 3.3%
TO 5500FT, THEN 2.5%.
 - HOLDING NOT AVBL
WHEN M301A ACTIVE.

Changes: MISSED APCH INSTRUCTIONS, WPT NAMING CONVENTION, Editorial.

HOTGN01-179