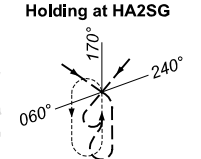
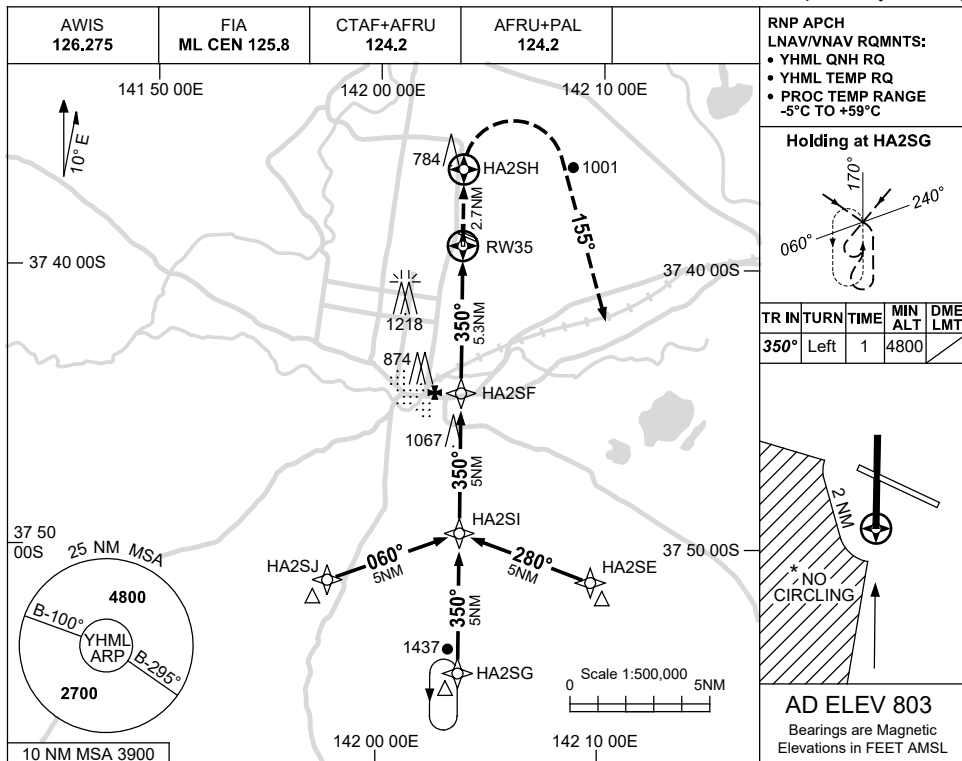


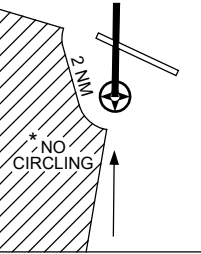
USE QNH

RNP RWY 35
HAMILTON, VIC (YHML)

13 JUN 2024

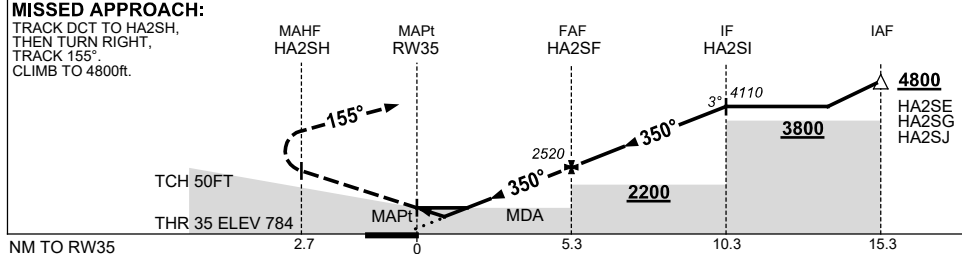


TR IN	TURN	TIME	MIN ALT	DME LMT
350°	Left	1	4800	



AD ELEV 803
Bearings are Magnetic
Elevations in FEET AMSL

NM TO NEXT WPT	RW35	1	1.6	2	3	4	HA2SF	1	2	3	4	HA2SI		
ALT (3° APCH PATH)		1140	1340	1470	1790	2110	2520	2840	3160	3470	3790	4110		



NOTES

CATEGORY	A	B	C	D
LNAV/VNAV		1140 (356-2.0)		NOT APPLICABLE
LNAV		1340 (556-3.2)		
CIRCLING*	1450 (647-2.4)		1550 (747-4.0)	
ALTERNATE	(1147-4.4)		(1247-6.0)	

- MAX IAS: INITIAL : 210KT.
- * 2. NO CIRCLING IN SECTOR STH OF RWY 10/28 AND WEST OF RWY 17/35 BEYOND 2NM.

Changes: DIST-ALT, THR 35 ELEV, ALT AT FAF, ALT AT IF, LNAV/VNAV DH, LNAV MDH.

HMLGN02-179