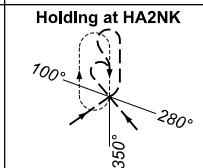
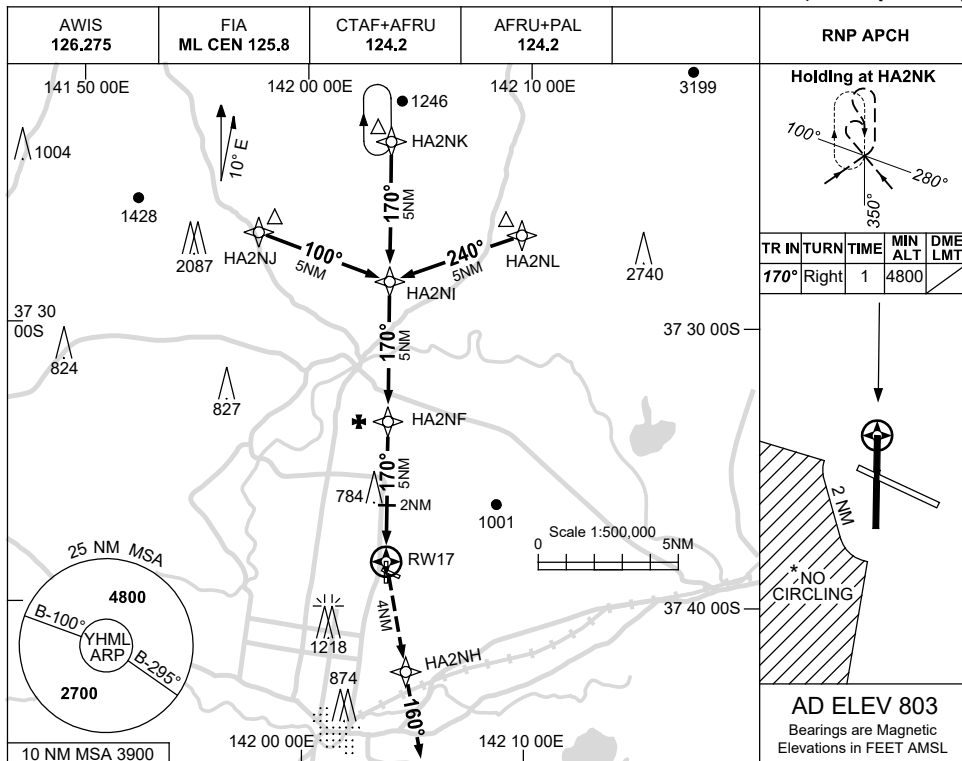


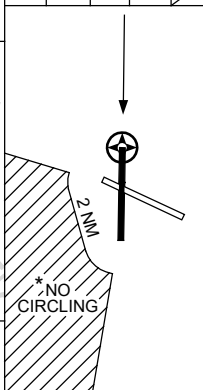
USE QNH

RNP RWY 17  
HAMILTON, VIC (YHML)

30 NOV 2023

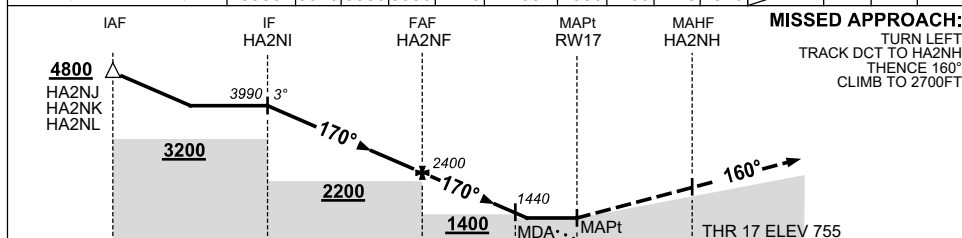


TR	IN	TURN	TIME	MIN ALT	DME LMT
170°	Right		1	4800	



**AD ELEV 803**  
Bearings are Magnetic  
Elevations in FEET AMSL

NM TO NEXT WPT	HA2NI	4	3	2	1	HA2NF	4	3	2	1.6	RW17			
ALT (3° APCH PATH)	3990	3670	3350	3030	2720	2400	2080	1760	1440	1310				



**MISSED APPROACH:**  
TURN LEFT.  
TRACK DCT TO HA2NH.  
THENCE 160°.  
CLIMB TO 2700FT.

**NOTES**

CATEGORY	A	B	C	D
LNAV	1310 (555-3.1)			NOT APPLICABLE
CIRCLING *	1450 (647-2.4)	1550 (747-4.0)		
ALTERNATE	(1147-4.4)		(1247-6.0)	

- 1. MAX IAS:  
INITIAL : 210KT.
- \*2. NO CIRCLING IN SECTOR STH OF RWY 10/28 AND WEST OF RWY 17/35 BEYOND 2NM.

Changes: MINIMA, DIST/ALT TABLE, SDF MOCA, WPT NAMES, NEW LOGO, Editorial.

HMLGN01-177