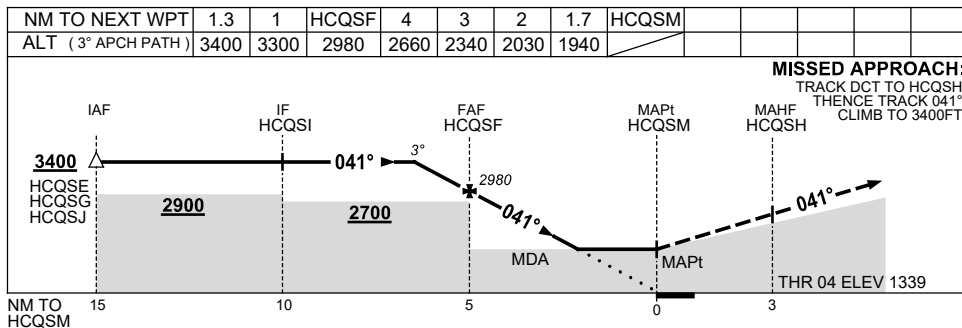
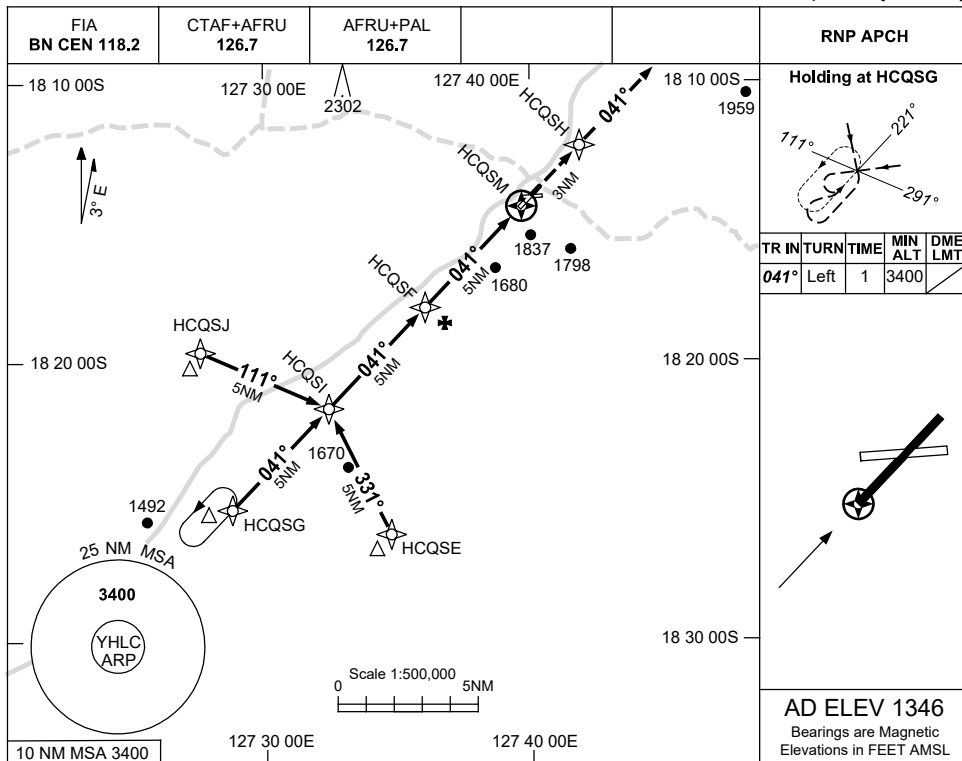


USE QNH

RNP RWY 04

HALLS CREEK, WA (YHLC)

8 SEP 2022



NOTES

- MAX IAS:
INITIAL : 210KT.
- AWIS (PHONE)
08 6216 2617

CATEGORY	A	B	C	D
LNAV	1940 (594-3.4)			NOT APPLICABLE
CIRCLING	2350 (1004-2.4)		2450 (1104-4.0)	
ALTERNATE	(1504-4.4)		(1604-6.0)	

Changes: CHART TITLE, PBN SPECIFICATION BOX.

HLCGN01-172