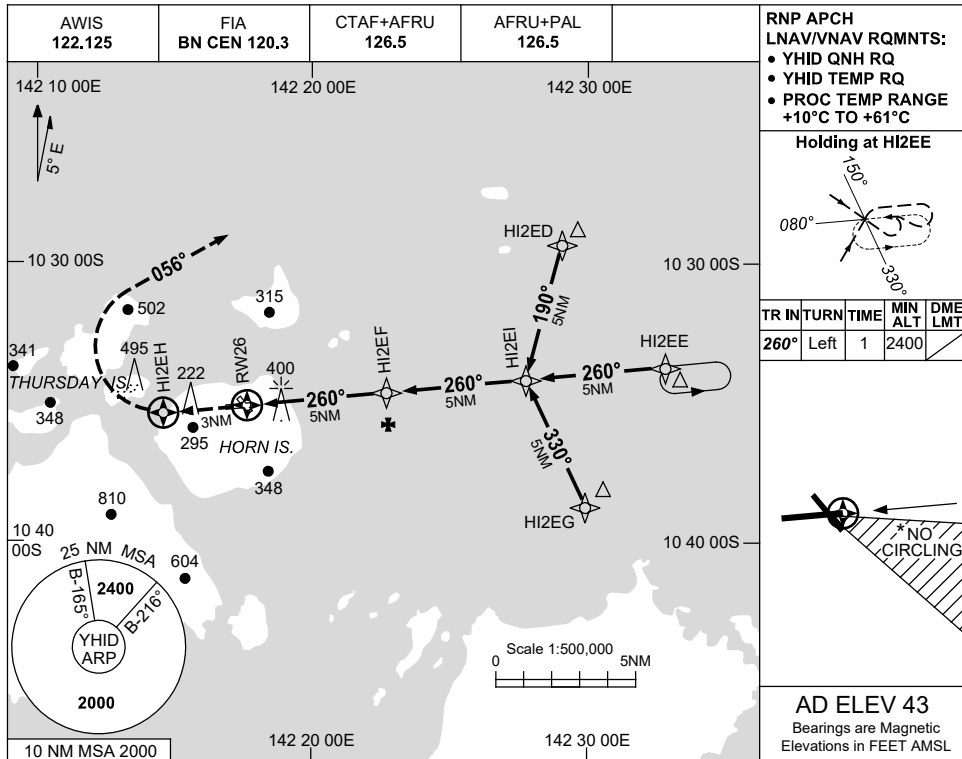


USE QNH

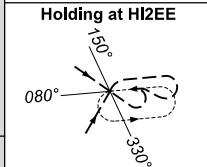
RNP RWY 26

**HORN ISLAND, QLD (YHID)**

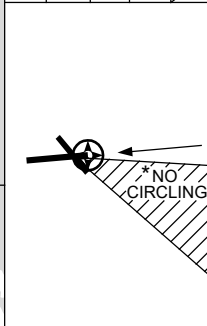
7 SEP 2023



**RNP APCH**  
**LNAV/VNAV RQMNTS:**  
 • YHID QNH RQ  
 • YHID TEMP RQ  
 • PROC TEMP RANGE  
 +10°C TO +61°C

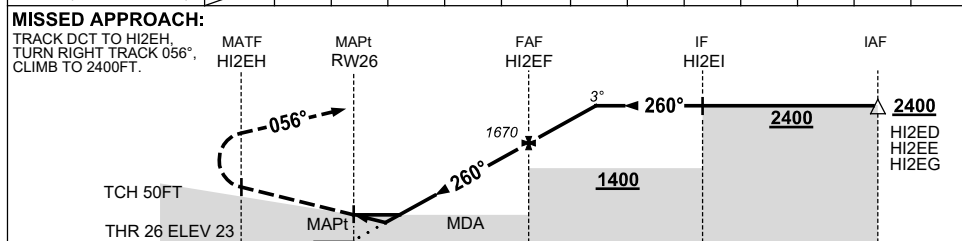


TR	IN	TURN	TIME	MIN ALT	DME LMT
260°	Left	1	2400		



**AD ELEV 43**  
 Bearings are Magnetic  
 Elevations in FEET AMSL

NM TO NEXT WPT	RW26	1.9	2.4	3	4	HI2EF	1	2.3				
ALT (3° APCH PATH)		670	830	1030	1350	1670	1980	2400				



- NOTES**
1. MAX IAS: INITIAL : 210KT.
  - \* 2. NO CIRCLING IN SECTOR SOUTH OF RWY 26 AND EAST OF RWY 32.
  3. LANDING NOT PERMITTED RWY 32.
  4. VERTICAL PATH NOT ALIGNED WITH PAPI RWY 26.

CATEGORY	A	B	C	D
LNAV/VNAV	670 (647-3.7)			NOT APPLICABLE
LNAV	830 (807-4.6)			
CIRCLING *	970 (927-2.4)		1030 (987-4.0)	
ALTERNATE	(1427-4.4)		(1487-6.0)	

Changes: WPT NAMING CONVENTION. HIDGN02-176