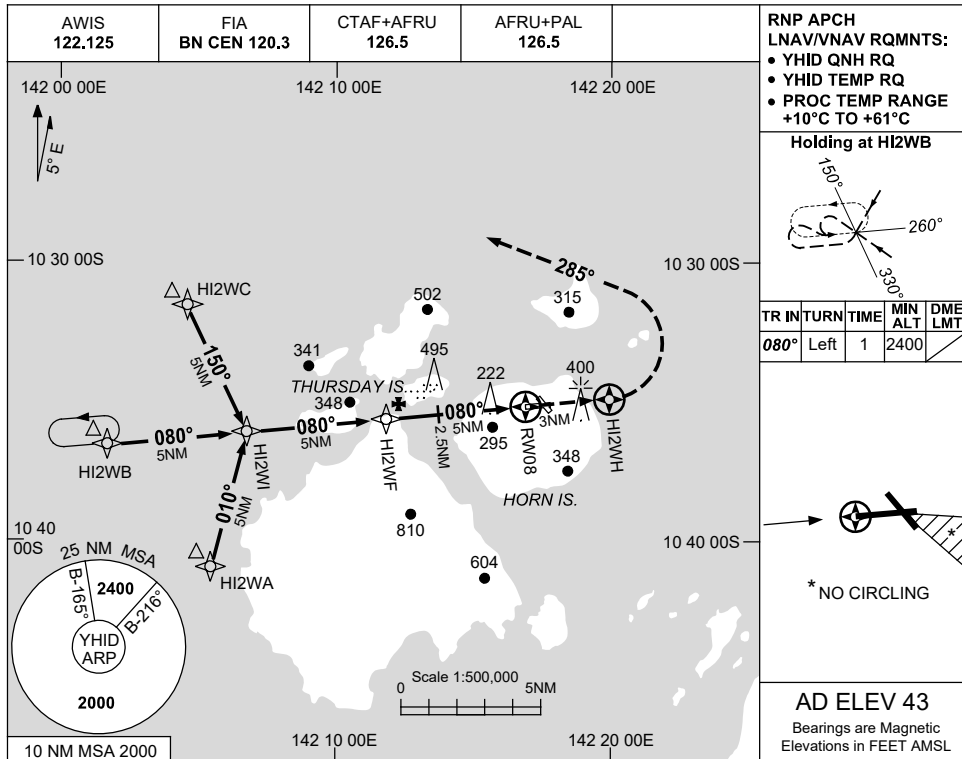


USE QNH

RNP RWY 08

**HORN ISLAND, QLD (YHID)**

7 SEP 2023



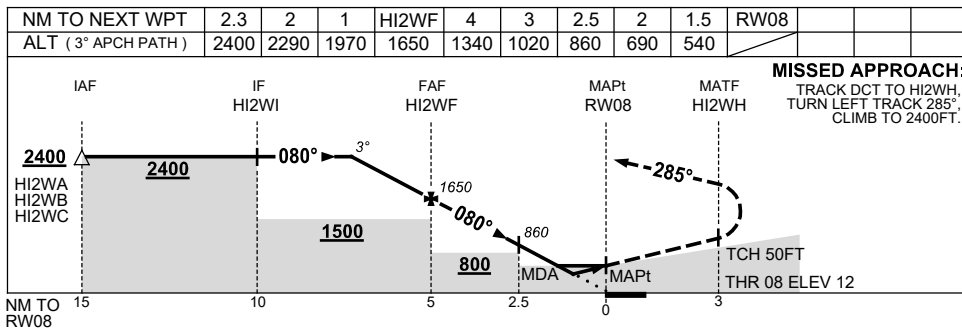
**RNP APCH LNAV/VNAV RQMNTS:**

- YHID QNH RQ
- YHID TEMP RQ
- PROC TEMP RANGE +10°C TO +61°C

**Holding at HI2WB**

TR	IN	TURN	TIME	MIN ALT	DME LMT
080°	Left	1	2400		

**AD ELEV 43**  
Bearings are Magnetic  
Elevations in FEET AMSL



**NOTES**

CATEGORY	A	B	C	D
LNAV/VNAV		540 (528-3.0)		NOT APPLICABLE
LNAV		690 (678-3.9)		
CIRCLING *	970 (927-2.4)		1030 (987-4.0)	
ALTERNATE		(1427-4.4)	(1487-6.0)	

1. MAX IAS: INITIAL : 210KT.
- \* 2. NO CIRCLING IN SECTOR SOUTH OF RWY 26 AND EAST OF RWY 32.
3. LANDING NOT PERMITTED RWY 32.

Changes: WPT NAMING CONVENTION, MIN ALT.

HIDGN01-176