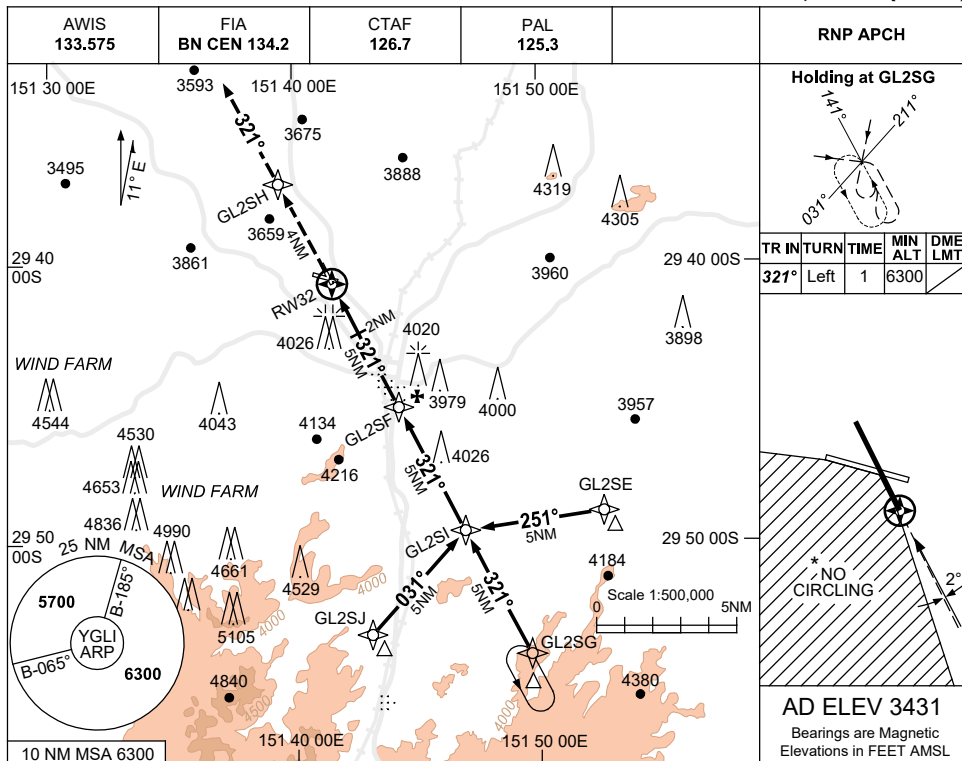


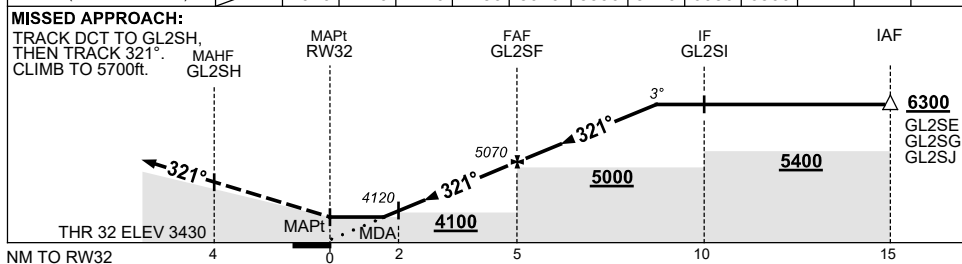
USE QNH

RNP RWY 32  
**GLEN INNES, NSW (YGLI)**

28 NOV 2024



NM TO NEXT WPT	RW32	1.8	2	3	4	GL2SF	1	2	3	3.9			
ALT (3° APCH PATH)		4040	4120	4440	4750	5070	5390	5710	6030	6300			



**NOTES**

CATEGORY	A	B	C	D
LNAV	4040 (609-3.5)			NOT APPLICABLE
CIRCLING *	4370 (939-2.4)		4530 (1099-4.0)	
ALTERNATE	(1439-4.4)		(1599-6.0)	

- \* 1. MAX IAS: INITIAL : 210KT.
- 2. NO CIRCLING IN SECTOR SW OF RWYS 10 / 28 AND 14 / 32.
- 3. COLOUR: SEE SPEC NOTICES.

Changes: OBSTACLE ELEVATION, WPT NAMING CONVENTION, DIST-ALT TABLE.

GLIGN02-181