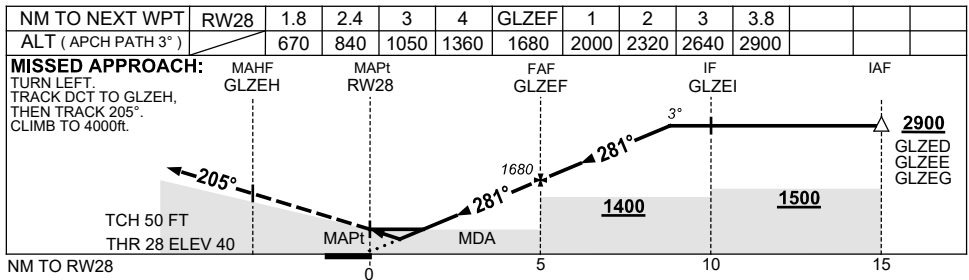
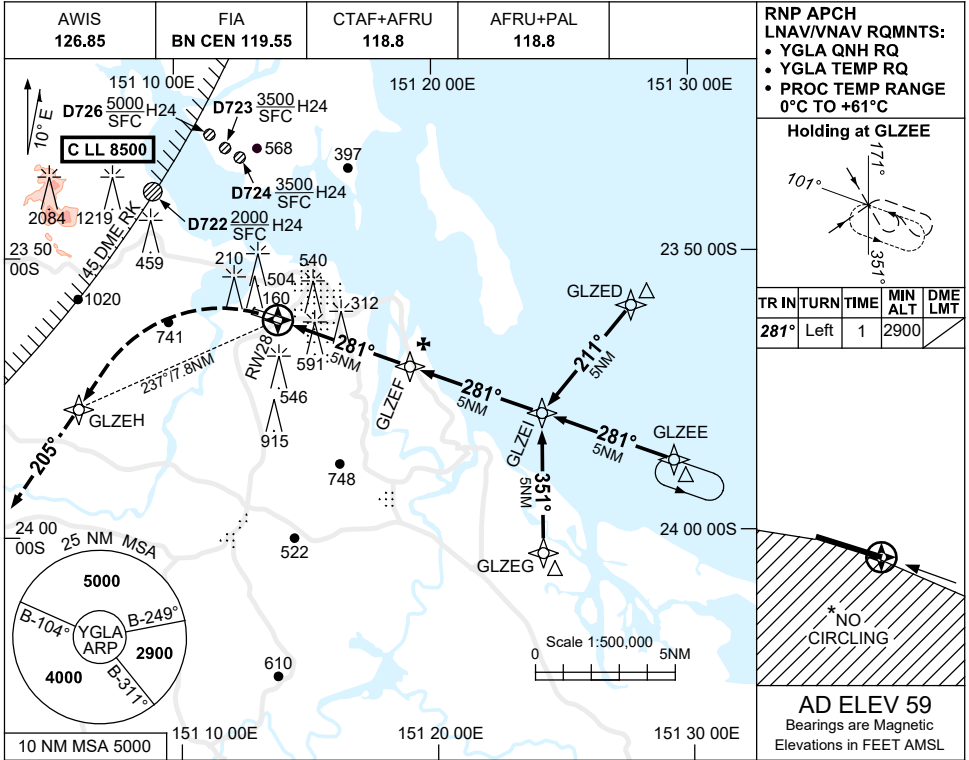


28 NOV 2024

USE QNH

RNP RWY 28
GLADSTONE, QLD (YGLA)



NOTES

1. MAX IAS:
INITIAL : 210KT.
- *2. NO CIRCLING STH OF RWY 10 / 28.
3. COLOUR: SEE SPEC NOTICES.
4. CAUTION: PROC IS OVERLAID BY PROC AT YFLD. ACFT SEPARATION IS NOT ASSURED.

CATEGORY	A	B	C	D
LNAV/VNAV	670 (630-3.6)			NOT APPLICABLE
LNAV	840 (800-4.6)			
CIRCLING *	990 (931-2.4)		1170 (1111-4.0)	
ALTERNATE	(1431-4.4)		(1611-6.0)	

Changes: NOTE 4.

GLAGN02-181