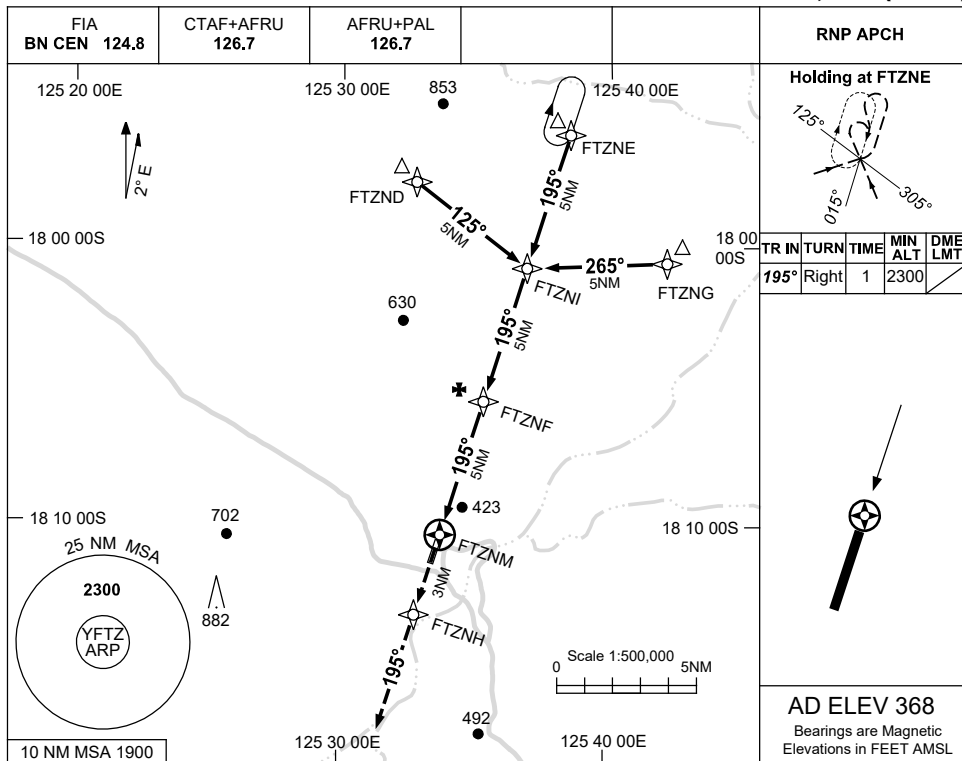


USE QNH

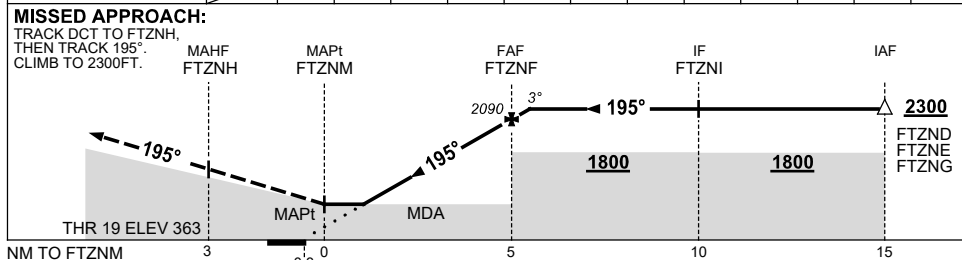
RNP RWY 19

8 SEP 2022

FITZROY CROSSING, WA (YFTZ)



NM TO NEXT WPT	FTZNM	1.4	2	3	4	FTZNF	0.7			
ALT (3° APCH PATH)		930	1140	1450	1770	2090	2300			



NOTES

CATEGORY	A	B	C	D
LNAV	930 (562-3.2)			NOT APPLICABLE
CIRCLING	1040 (672-2.4)	1140 (772-4.0)		
ALTERNATE	(1172-4.4)		(1272-6.0)	

- MAX IAS: INITIAL : 210KT.
- CAUTION:** POSSIBILITY OF STOCK ON AERODROME.
- AWIS (PHONE) 08 6216 2612

Changes: CHART TITLE, PBN SPECIFICATION BOX.

FTZGN02-172