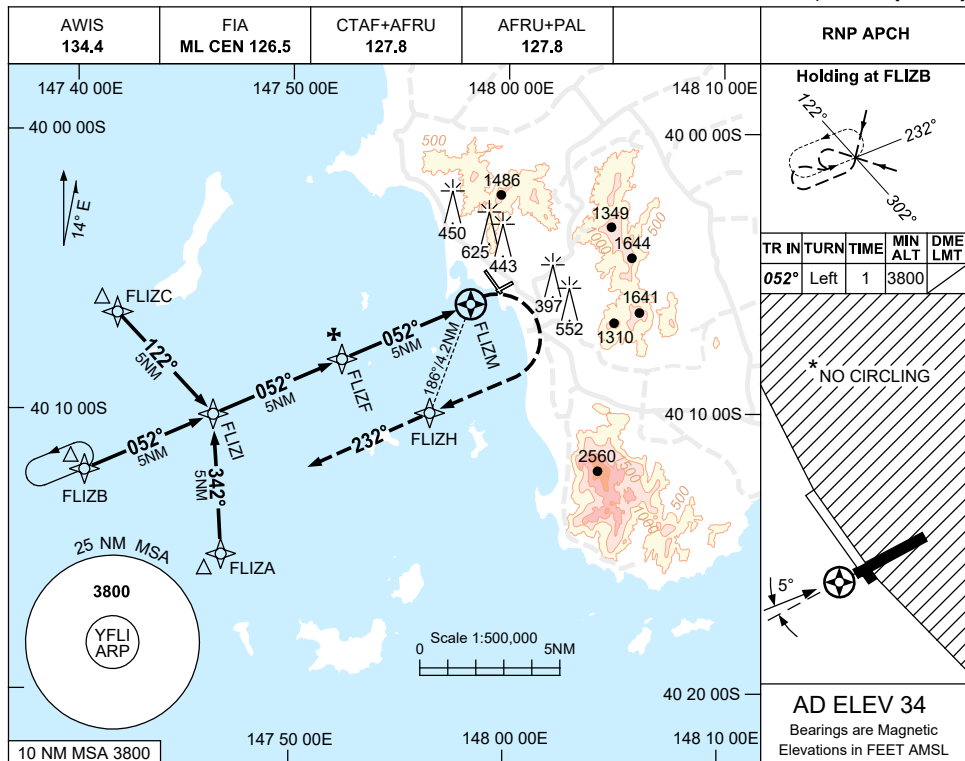


USE QNH

RNP Z RWY 05

15 JUN 2023

FLINDERS ISLAND, TAS (YFLI)



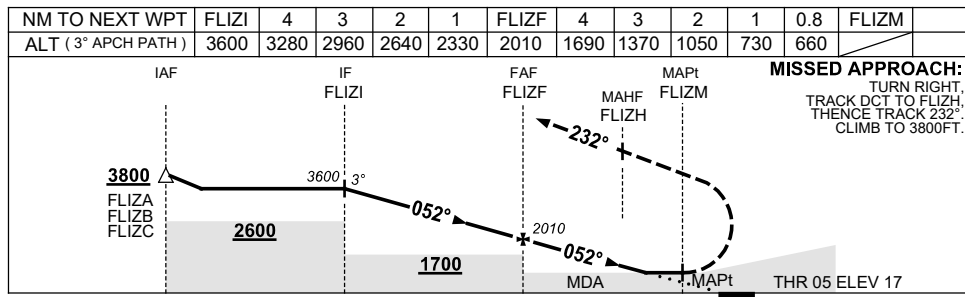
Holding at FLIZB

TR	IN	TURN	TIME	MIN ALT	DME LMT
052°	Left	1		3800	

* NO CIRCLING

5°

AD ELEV 34
Bearings are Magnetic
Elevations in FEET AMSL



NM TO FLIZM 15 10 5 0 1.1

CATEGORY	A	B	C	D
LNAV	660 (643-3.7)			NOT APPLICABLE
CIRCLING *	1170 (1136-2.4)		1270 (1236-4.0)	
ALTERNATE	(1636-4.4)		(1736-6.0)	

- NOTES**
- MAX IAS: INITIAL : 210KT, MAP TURN: 160KT.
 - *2. NO CIRCLING EAST OF RWY 14/32.
 3. COLOUR: SEE SPEC NOTICES.

Changes: CHART TITLE, PBN SPECIFICATION BOX, Editorial.

FLIGN01-175