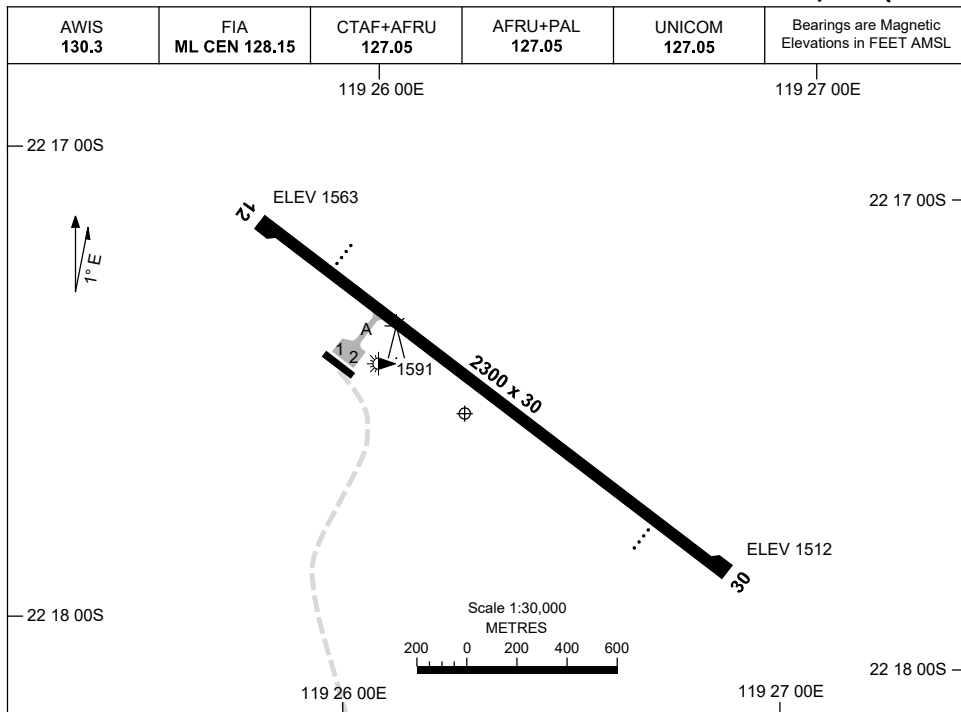


28 NOV 2024

AD ELEV 1563  
22 17 31S 119 26 14E

AERODROME CHART - Page 1  
**FORTESCUE DAVE FORREST, WA (YFDF)**



	<b>AERODROME LIGHTING</b>
<b>RWY</b>	TAXIWAY : BLUE EDGE RL : AFRU+PAL 127.05 , SDBY (45 SEC), PTBL (BY ARRANGEMENT)
<b>12</b> <small>123</small> <b>303</b> <b>30</b>	PAPI LEFT SIDE 3.0° 54FT LIRL PTBL PAPI LEFT SIDE 3.0° 54FT LIRL PTBL

**NOTES**

1. **CAUTION:** CHRISTMAS CREEK (YCHK) AD 12NM TO E.  
SEE OPERATING PROCEDURES ON AERODROME CHART Page 2.
2. **CAUTION:** CHRISTMAS CREEK (YCHK) IS IN CLOSE PROXIMITY AND THE APCH/DEP TRACKS CROSS CLOSE TO THE GROUND. DUE TO TERRAIN SHIELDING, VHF CONTACT WITH ACFT ON OR CLOSE TO THE GROUND AT YCHK IS NOT POSSIBLE.
3. FIA FREQ 128.15 AVBL IN CIRCUIT.
4. AWIS RQ THREE ONE-SECOND PULSE TO ACTIVATE.

Changes: NOTE 4.

FDFAD01-181