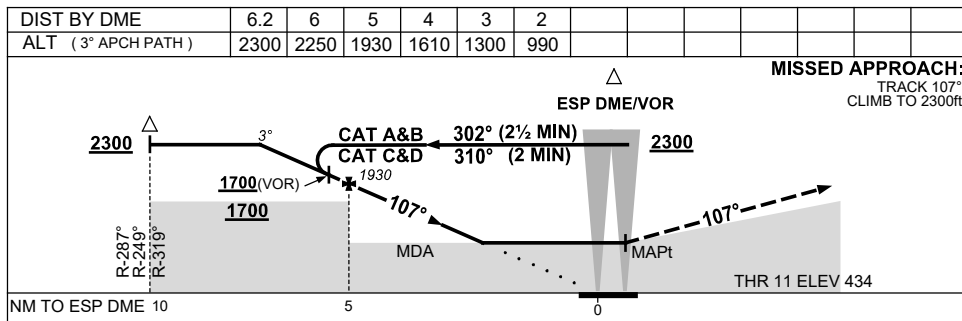
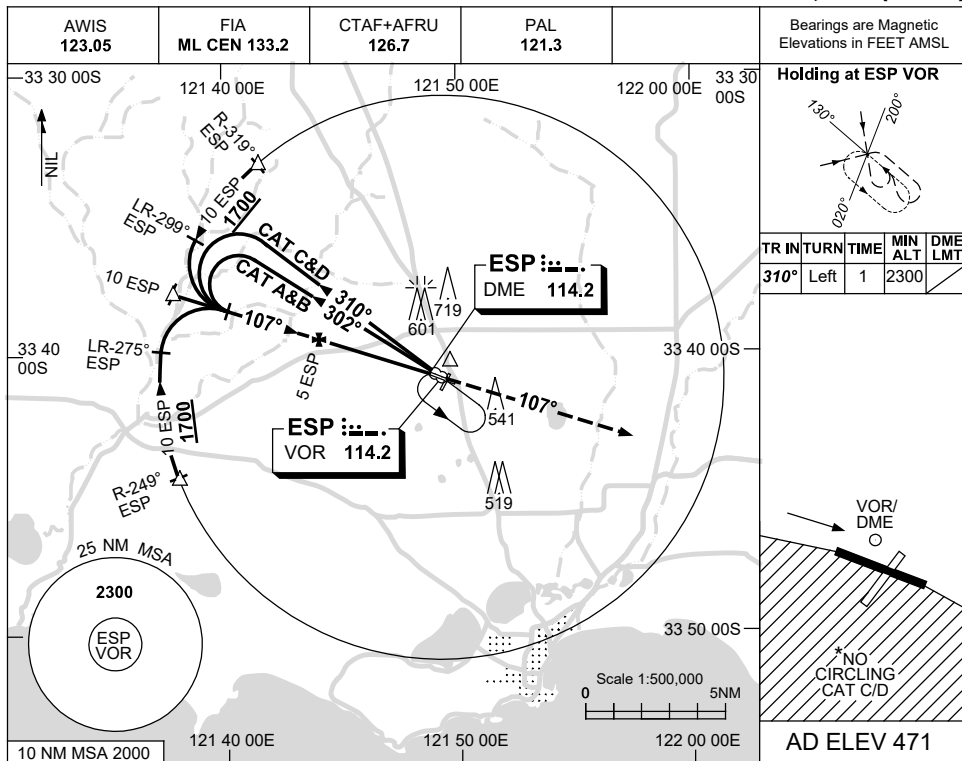


USE QNH

VOR RWY 11  
**ESPERANCE, WA (YESP)**

21 MAR 2024



CATEGORY	A	B	C	D
S-I VOR		<b>1040</b> (606-3.4)		
S-I VOR/DME		<b>990</b> (556-3.1)		
CIRCLING*	<b>1120</b> (649-2.4)		<b>1230</b> (759-4.0)	<b>1260</b> (789-5.0)
ALTERNATE	(1149-4.4)		(1259-6.0)	(1289-7.0)

**NOTES**

1. MAX IAS:  
INITIAL : 210KT.
- \* 2. NO CIRCLING CAT C/D  
STH OF RWY 11/29.

Changes: CAT C CIRCLING, MAG VAR, Editorial.

ESPVO01-178