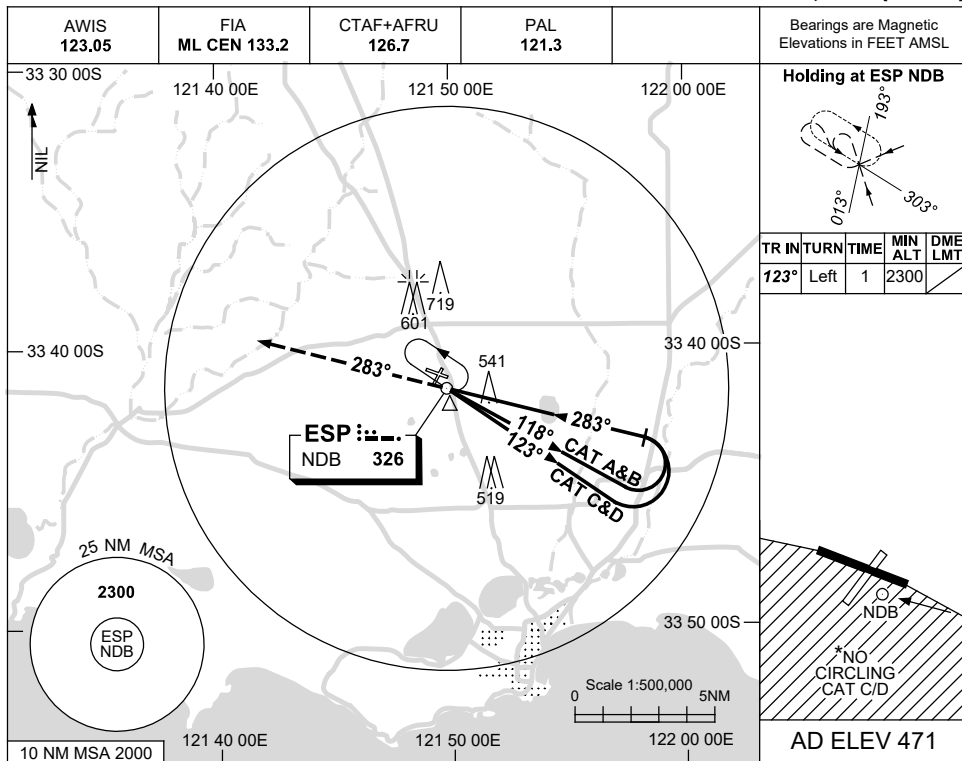


USE QNH

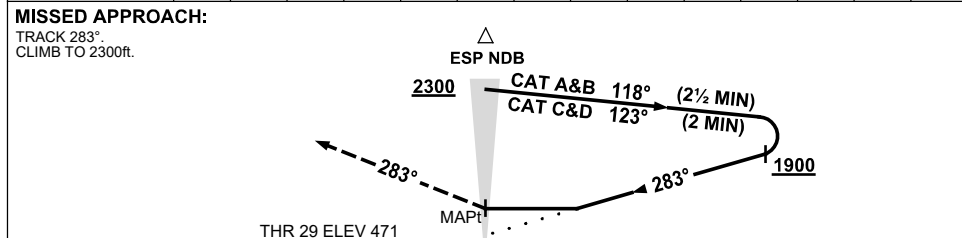
NDB RWY 29

21 MAR 2024

ESPERANCE, WA (YESP)



DME DIST	NOT APPLICABLE			
ALT				



NOTES

CATEGORY	A	B	C	D
S-I NDB	1040 (569-3.2)			
CIRCLING*	1120 (649-2.4)	1230 (759-4.0)	1260 (789-5.0)	
ALTERNATE	(1149-4.4)	(1259-6.0)	(1289-7.0)	

1. MAX IAS: INITIAL : 180KT.
- * 2. NO CIRCLING CAT C/D STH OF RWY 11/29.

Changes: CAT C CIRCLING, MAG VAR, Editorial.

ESPNB02-178