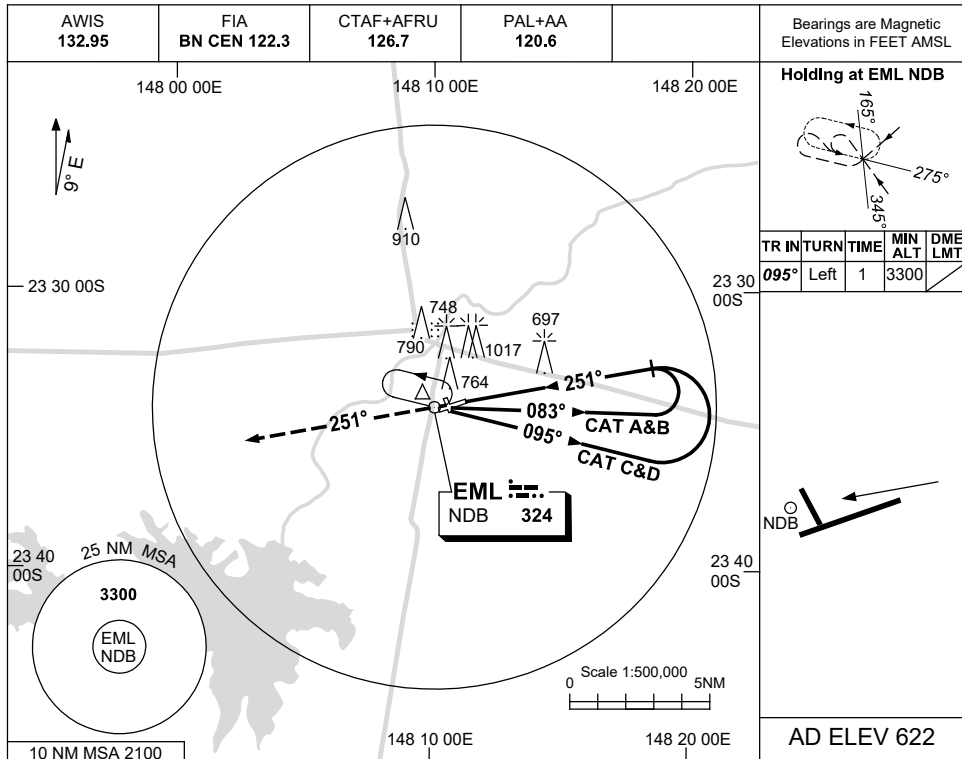


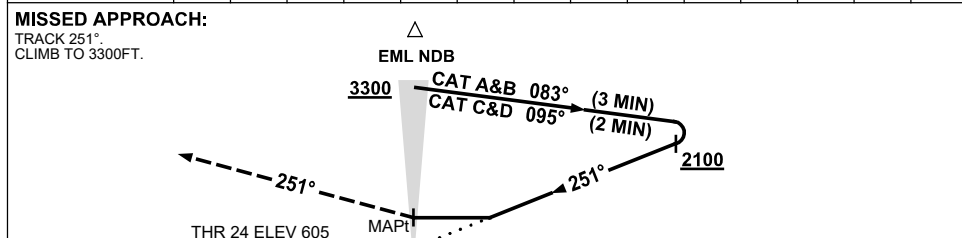
USE QNH

NDB RWY 24  
**EMERALD, QLD (YEML)**

16 JUN 2022



DME DIST								
ALT	NOT APPLICABLE							



**NOTES**

CATEGORY	A	B	C	D
S-I NDB	<b>1320 (715-4.1)</b>			
CIRCLING	<b>1420 (798-2.4)</b>	<b>1520 (898-4.0)</b>	<b>1520 (898-5.0)</b>	
ALTERNATE	(1298-4.4)	(1398-6.0)	(1398-7.0)	

1. MAX IAS:  
 INITIAL :  
 CAT C&D 210KT.

Changes: PAL+AA.

EMLNB01-171