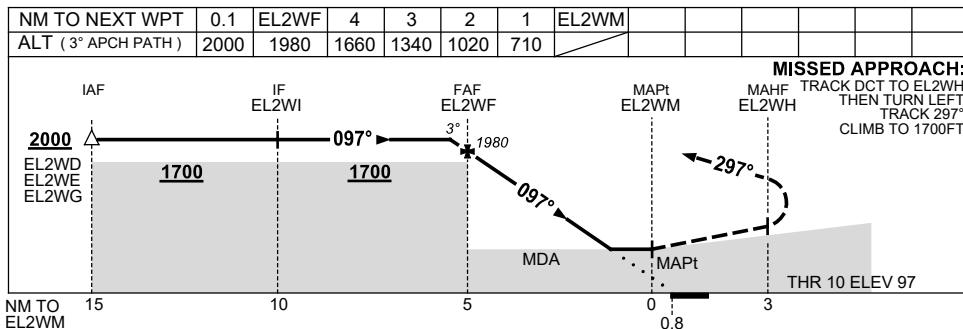
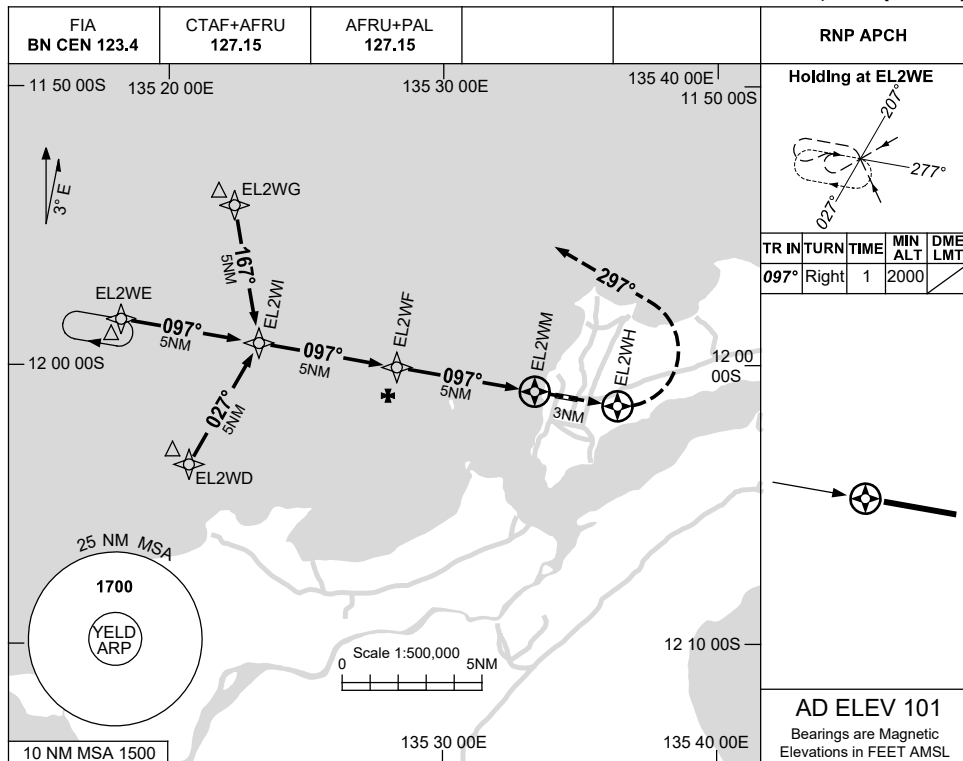


USE QNH

RNP RWY 10

8 SEP 2022

ELCHO ISLAND, NT (YELD)



NOTES

CATEGORY	A	B	C	D
LNAV	710 (609-3.5)			NOT APPLICABLE
CIRCLING	710 (609-2.4)	800 (699-4.0)		
ALTERNATE	(1109-4.4)		(1199-6.0)	

1. MAX IAS:
INITIAL : 210KT.

Changes: CHART TITLE, PBN SPECIFICATION BOX.

ELDGN01-172