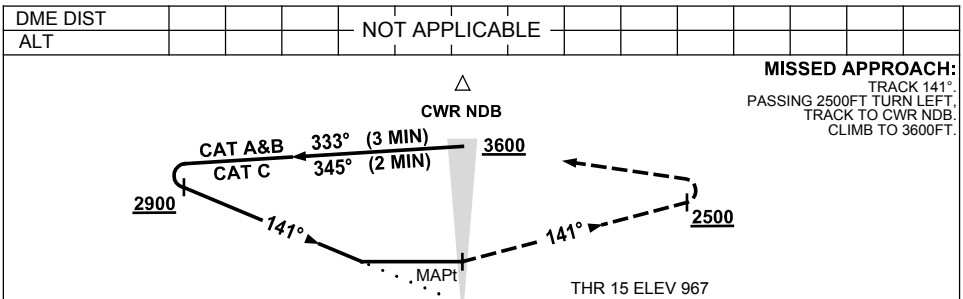
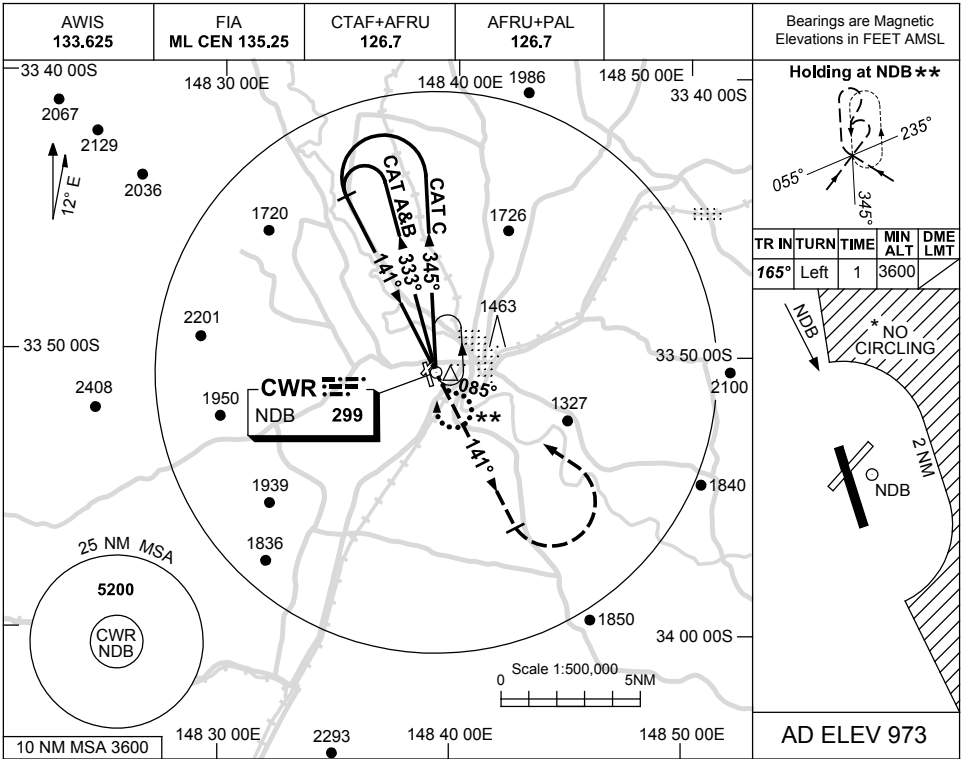


USE QNH

NDB RWY 15

23 MAY 2019

**COWRA, NSW (YCWR)**



CATEGORY	A	B	C	D
S-I NDB	1850 (877-5.0)			NOT APPLICABLE
CIRCLING *	1850 (877-2.4)	1850 (877-4.0)		
ALTERNATE	(1377-4.4)	(1377-6.0)		

\*2. NO CIRCLING E OF RWY 15/33 BEYOND 2NM.  
 \*\*3. PROC TURN (80°/260°) RQ TO JOIN PROC FROM HOLD.

Changes: CO-ORD FORMAT.

CWRNB01-159