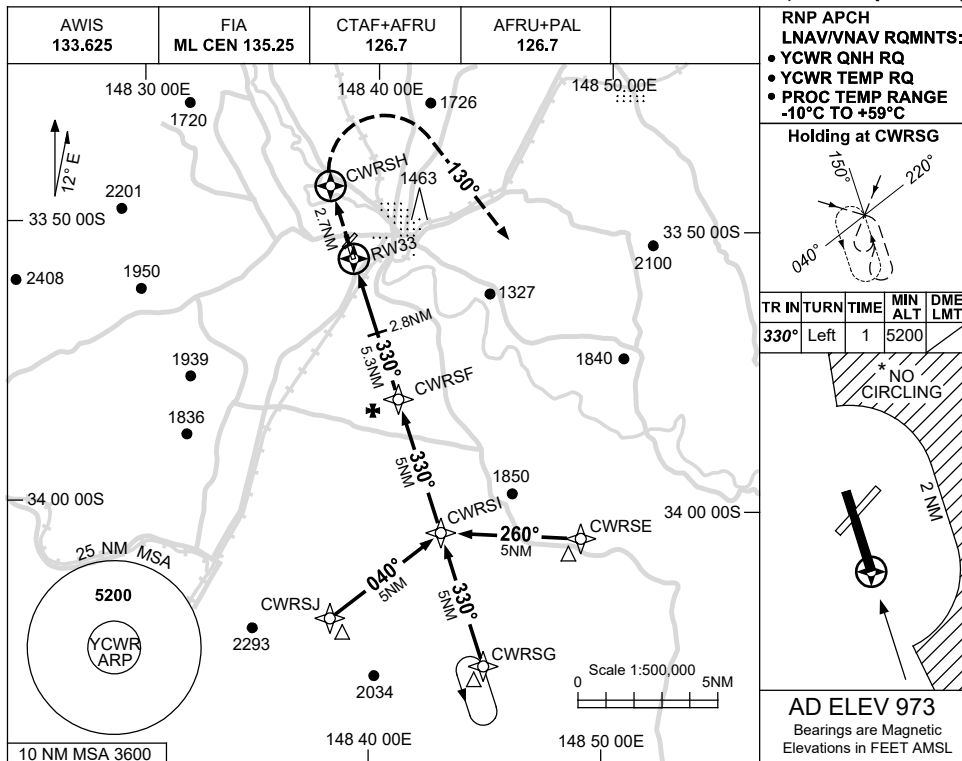


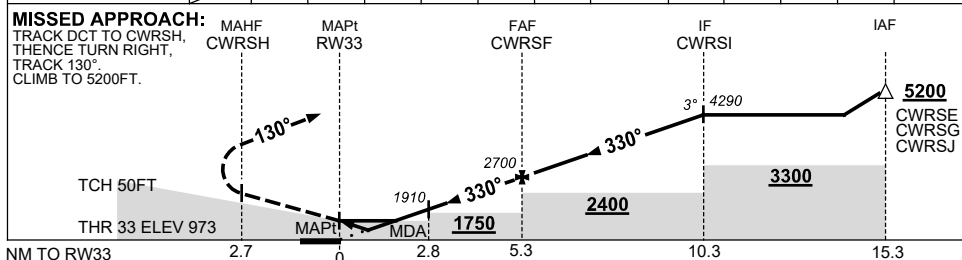
USE QNH

RNP RWY 33  
**COWRA, NSW (YCWR)**

15 JUN 2023



NM TO NEXT WPT	RW33	1.2	1.8	2.8	3	4	5	CWRSF	1	2	3	4	CWRSI
ALT (3° APCH PATH)		1400	1600	1910	1980	2300	2620	2700	3020	3340	3660	3970	4290



**NOTES**

CATEGORY	A	B	C	D
LNAV/VNAV		1400 (427-2.4)		NOT APPLICABLE
LNAV		1600 (627-3.6)		
CIRCLING*	1650 (677-2.4)		1810 (837-4.0)	
ALTERNATE	(1177-4.4)		(1337-6.0)	

1. MAX IAS: INITIAL : 210KT.
- \*2. NO CIRCLING E OF RWY 15/33 BEYOND 2NM.

Changes: CHART TITLE, PBN SPECIFICATION BOX, Editorial.

CWRGN02-175